

ABOVE
ONE

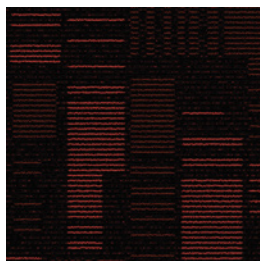


CONSTRUCTION	LOOP
PILE FIBER COMPOSITION	100% Nylon (Polyamide 6)
YARN TYPE	BCF
DYE METHOD	Solution Dyed
PILE WEIGHT	700 g/m2
NUMBER OF TUFTS	268600/m2
TUFTING GAUGE	1/10"
PRIMARY BACKING	Non-Woven
SECONDARY BACKING	StableShield - 100% Vinyl
OPTIONAL BACKING	Recova-PU Cushion , EcoShield-100% Recycled Vinyl
TILE SIZE	50 cm x 50 cm
PILE HEIGHT	2.4 mm / 5.5 mm
TOTAL HEIGHT	7.5 mm
PILE TREATMENT	INVISTA Anti-Soil Treatment, Anti-Microbial (Optional)
RECOMMENDED INSTALLATION	Quarter Turn or Brick

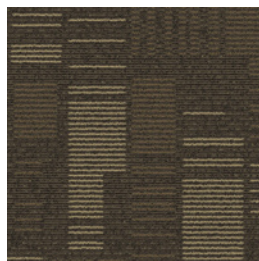


SPECIFICATIONS

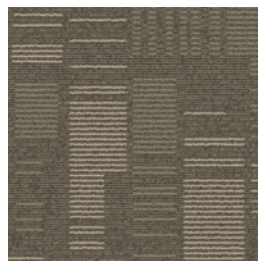
COLOURLINE



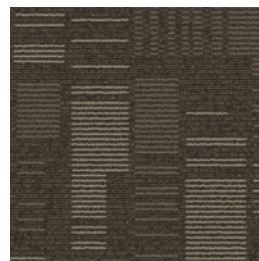
Above One - 726



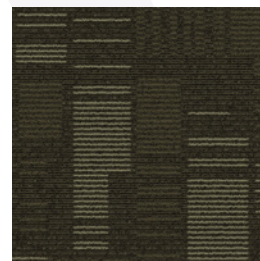
Above One - 743



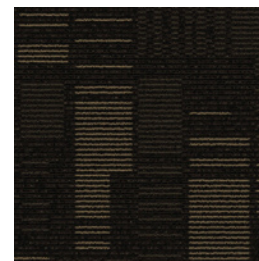
Above One - 744



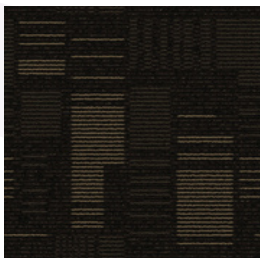
Above One - 745



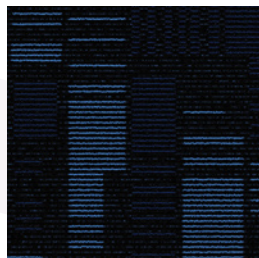
Above One - 746



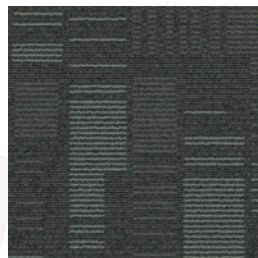
Above One - 747



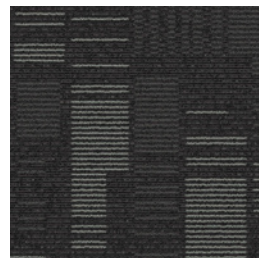
Above One - 749



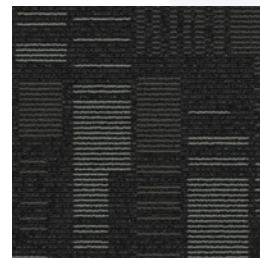
Above One - 755



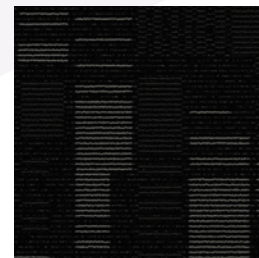
Above One - 776



Above One - 777



Above One - 778

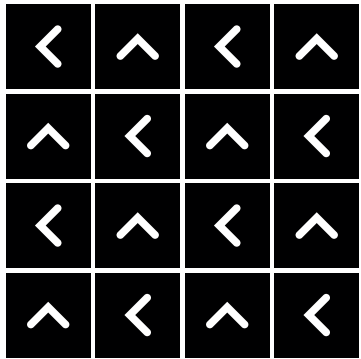


Above One - 779

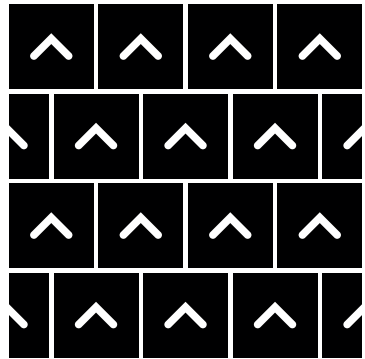


HOW TO INSTALL

QUARTER TURN



BRICK





Standard
CARPETS

www.standardcarpets.com