

CASH COW

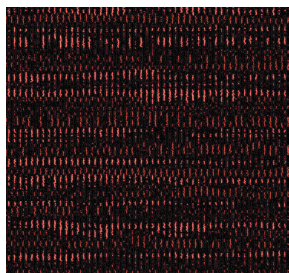




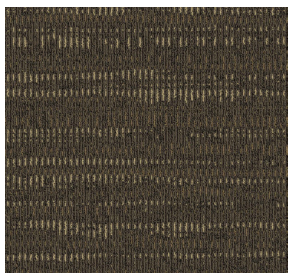
CONSTRUCTION	LOOP
PILE FIBER COMPOSITION	100% Nylon (Polyamide 6)
YARN TYPE	BCF
DYE METHOD	Solution Dyed
PILE WEIGHT	700g/m ²
NUMBER OF TUFTS	268600/m ²
TUFTING GAUGE	1/10"
PRIMARY BACKING	Non-Woven
SECONDARY BACKING	Stable Shield - 100% Vinyl
OPTIONAL BACKING	Recova-PU Cushion ; EcoShield-100% Recycled Vinyl
TILE SIZE	50 cm x 50 cm (19.6 in x 19.6 in)
PILE HEIGHT	2.4 mm / 5.5 mm
TOTAL HEIGHT	7.5 mm
PILE TREATMENT	INVISTA Anti-Soil Treatment; Anti-Microbial (optional)
RECOMMENDED INSTALLATION	Quarter Turn or Brick

S P E C I F I C A T I O N S

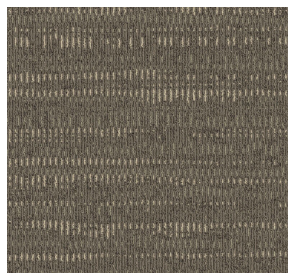
COLOURLINE



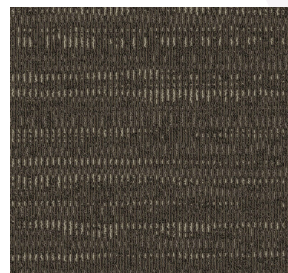
CASH COW - 726



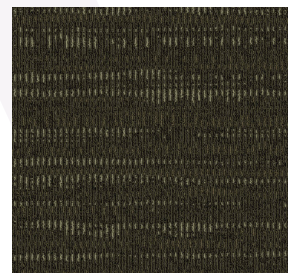
CASH COW - 743



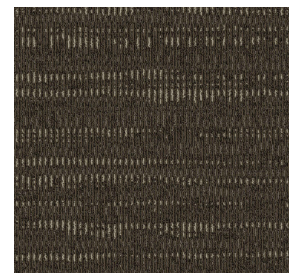
CASH COW - 744



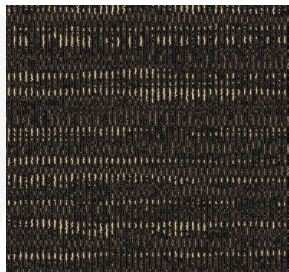
CASH COW - 745



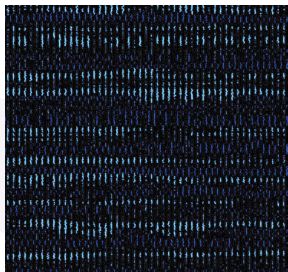
CASH COW - 746



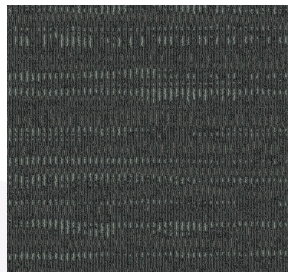
CASH COW - 747



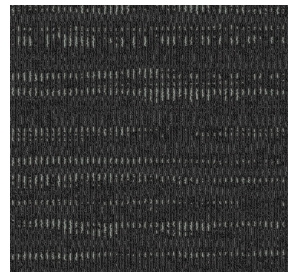
CASH COW - 749



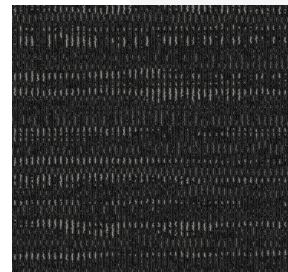
CASH COW - 755



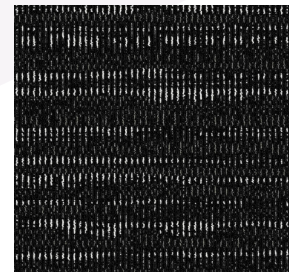
CASH COW - 776



CASH COW - 777



CASH COW - 778



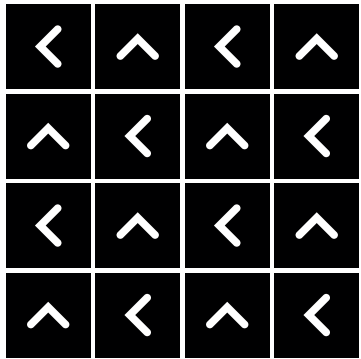
CASH COW - 779



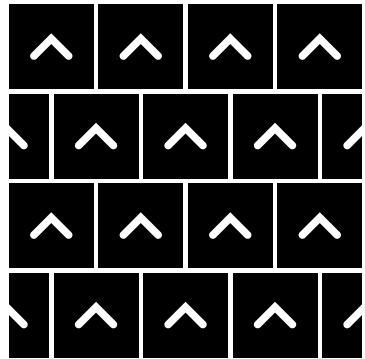


HOW TO INSTALL

QUARTER TURN



BRICK





Standard
CARPETS

www.standardcarpets.com