



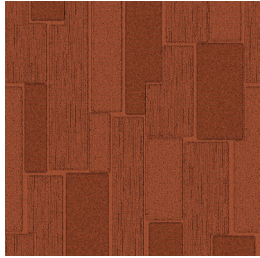
CITY SQUARE



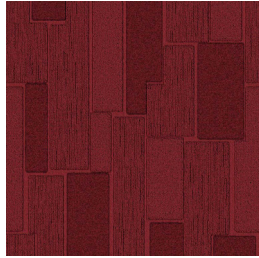
CONSTRUCTION	LOOP PILE TIP SHEARED
PILE FIBER COMPOSITION	100% Solution Dyed Nylon (Polyamide 6)
YARN TYPE	BCF
PILE WEIGHT	900g/m ²
NUMBER OF TUFTS	256750 /m ²
TUFTING GAUGE	1/10"
PRIMARY BACKING	Non-Woven
BACKING STRUCTURES	Stable Shield 100% Vinyl
OPTIONAL BACKING	Recova-PU Cushion , Eco-Shield-100% Recycled Vinyl
TILE SIZE	25 cm x 100 cm (9.8 in x 39.2 in)
PILE HEIGHT	3.0 mm / 8.0 mm
TOTAL HEIGHT	9.0 mm
PILE TREATMENT	INVISTA Anti - Soil , Anti-Microbial
RECOMMENDED INSTALLATION	Quarter Turn , Herringbone , Ashlar , Semi-Ashlar or Random Plank

S P E C I F I C A T I O N S

COLOURLINE



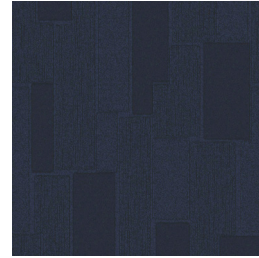
CITY-SQUARE-722



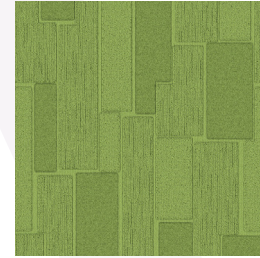
CITY-SQUARE-724



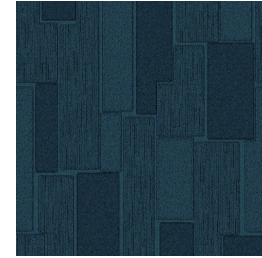
CITY-SQUARE-730



CITY-SQUARE-755



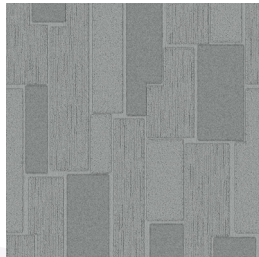
CITY-SQUARE-761



CITY-SQUARE-762



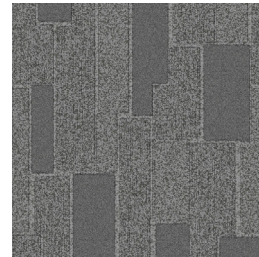
CITY-SQUARE-763



CITY-SQUARE-770



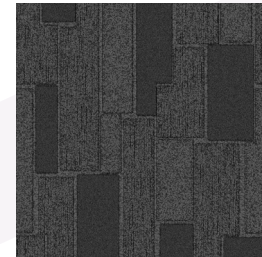
CITY-SQUARE-771



CITY-SQUARE-773



CITY-SQUARE-775



CITY-SQUARE-776



CITY-SQUARE-778



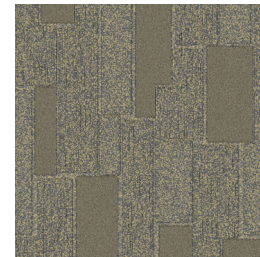
CITY-SQUARE-793



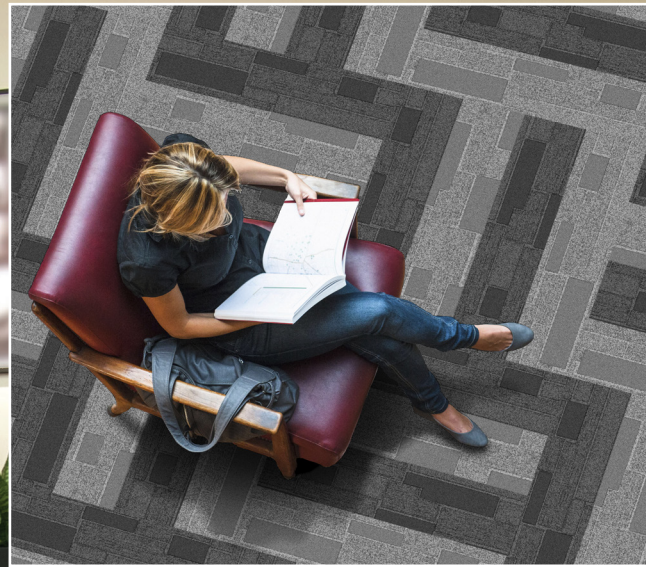
CITY-SQUARE-794



CITY-SQUARE-795



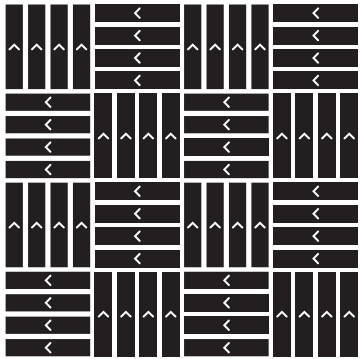
CITY-SQUARE-797



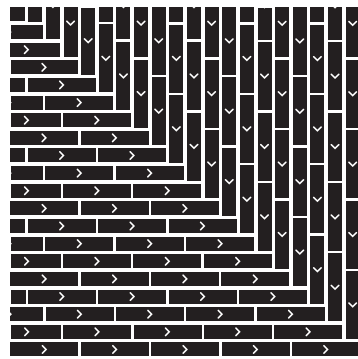


HOW TO INSTALL

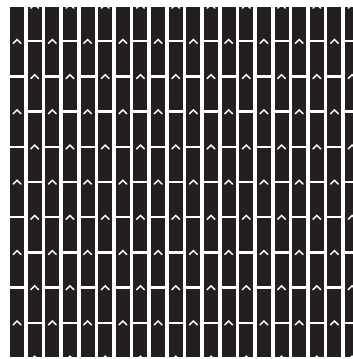
QUARTER TURN



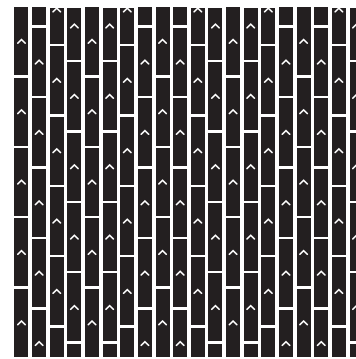
HERRINGBONE



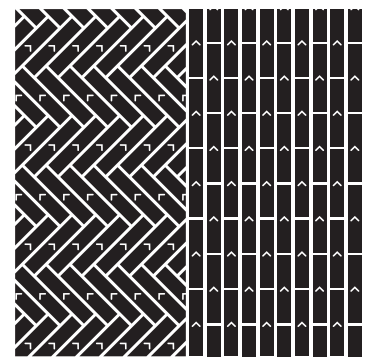
ASHLAR



SEMI ASHLAR



RANDOM PLANK





Standard
CARPETS

www.standardcarpets.com