




CITY WALK



<b>CONSTRUCTION</b>	LOOP PILE TIP SHEARED
<b>PILE FIBER COMPOSITION</b>	100% Nylon (Polyamide 6)
<b>YARN TYPE</b>	BCF
<b>DYE METHOD</b>	Solution Dyed
<b>PILE WEIGHT</b>	850g/m <sup>2</sup>
<b>NUMBER OF TUFTS</b>	118500m <sup>2</sup>
<b>TUFTING GAUGE</b>	1/10"
<b>PRIMARY BACKING</b>	Non-Woven
<b>SECONDARY BACKING</b>	Stable Shield - 100% Vinyl
<b>OPTIONAL BACKING</b>	Recova-PU Cushion , EcoShield-100% Recycled Vinyl
<b>TILE SIZE</b>	25 cm x 100 cm ( 9.8 in x 39.2 in )
<b>PILE HEIGHT</b>	3.5mm-8.0mm
<b>TOTAL PILE HEIGHT</b>	9.00mm
<b>PILE TREATMENT</b>	INVISTA Anti-Soil Treatment, Anti-Microbial (optional)
<b>RECOMMENDED INSTALLATION</b>	Quarter Turn, Herringbone, Ashlar, Semi-Ashlar or Random plank

# SPECIFICATIONS

# COLOURLINE



CITY WALK - 945



CITY WALK - 947



CITY WALK - 950



CITY WALK - 955



CITY WALK - 957



CITY WALK - 970



CITY WALK - 972



CITY WALK - 974



CITY WALK - 975



CITY WALK - 976



CITY WALK - 978



CITY WALK - 994



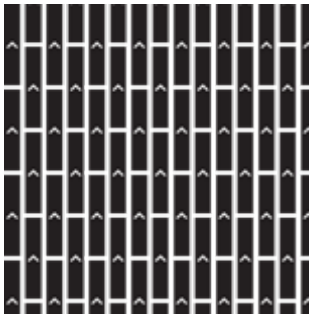
CITY WALK - 995



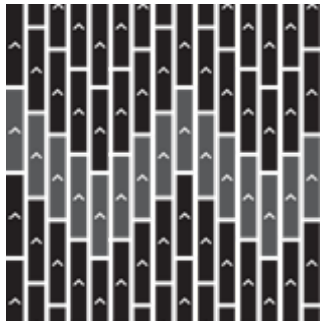


# HOW TO INSTALL

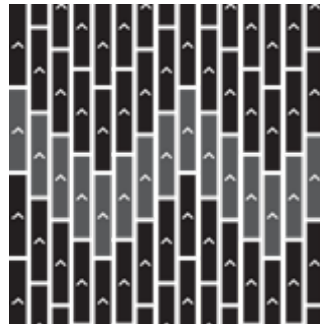
**ASHLAR**



**SEMI ASHLAR**



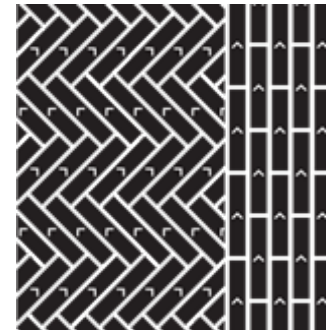
**QUARTER TURN**



**HERRINGBONE**



**RANDOM**





Standard  
*CARPETS*

[www.standardcarpets.com](http://www.standardcarpets.com)