



ENCORE



<b>CONSTRUCTION</b>	Loop
<b>PILE FIBER COMPOSITION</b>	100% Nylon (Polyamide 6)
<b>YARN TYPE</b>	Cable & BCF
<b>DYE METHOD</b>	Solution Dyed
<b>PILE WEIGHT</b>	750g/m <sup>2</sup>
<b>NUMBER OF TUFTS</b>	198660/m <sup>2</sup>
<b>TUFTING GAUGE</b>	1/12"
<b>PRIMARY BACKING</b>	Non-Woven
<b>SECONDARY BACKING</b>	Stable Shield - 100% Vinyl
<b>OPTIONAL BACKING</b>	Recova-PU Cushion , EcoShield-100% Recycled Vinyl
<b>TILE SIZE</b>	50 cm x 50 cm
<b>PILE HEIGHT</b>	3.2mm/5.0mm
<b>TOTAL HEIGHT</b>	8.00mm
<b>PILE TREATMENT</b>	INVISTA Anti-Soil Treatment, Anti-Microbial (optional)
<b>RECOMMENDED INSTALLATION</b>	Quarter Turn or Brick

# SPECIFICATIONS



# COLOURLINE



ENCORE - 725



ENCORE - 742



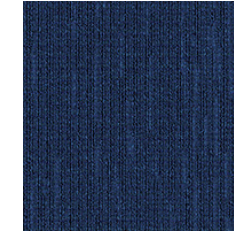
ENCORE - 744



ENCORE - 747



ENCORE - 748



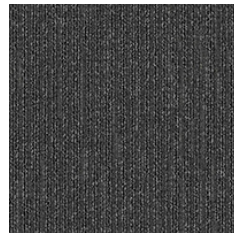
ENCORE - 758



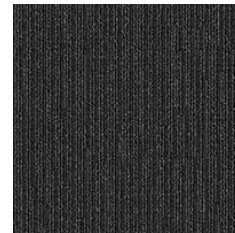
ENCORE - 761



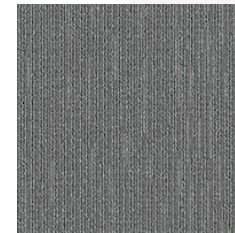
ENCORE - 766



ENCORE - 770



ENCORE - 771



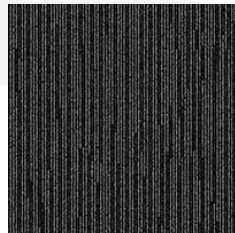
ENCORE - 775



ENCORE - 776



ENCORE - 778



ENCORE - 779



ENCORE - 791



ENCORE - 792



ENCORE - 799





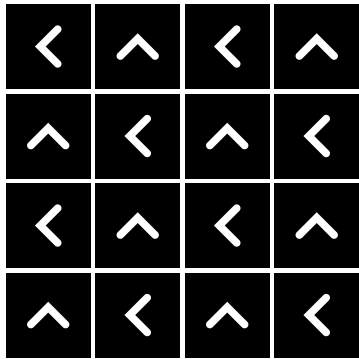




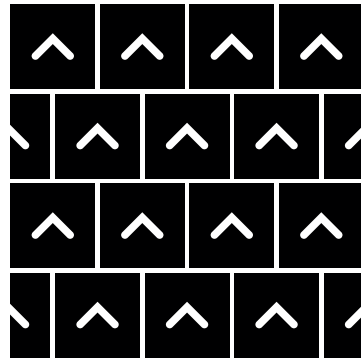


# HOW TO INSTALL

**QUARTER TURN**



**BRICK**







Standard  
*CARPETS*

[www.standardcarpets.com](http://www.standardcarpets.com)