

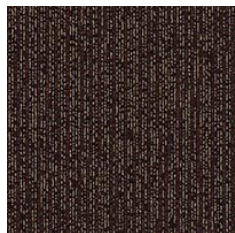


ENCORE

CONSTRUCTION	Loop
PILE FIBER COMPOSITION	100% Nylon (Polyamide 6)
YARN TYPE	Cable & BCF
DYE METHOD	Solution Dyed
PILE WEIGHT	750g/m ²
NUMBER OF TUFTS	198660/m ²
TUFTING GAUGE	1/12"
PRIMARY BACKING	Non-Woven
SECONDARY BACKING	Stable Shield - 100% Vinyl
OPTIONAL BACKING	Recova-PU Cushion , EcoShield-100% Recycled Vinyl
TILE SIZE	50 cm x 50 cm
PILE HEIGHT	3.2mm/5.0mm
TOTAL HEIGHT	8.00mm
PILE TREATMENT	INVISTA Anti-Soil Treatment, Anti-Microbial (optional)
RECOMMENDED INSTALLATION	Quarter Turn or Brick

SPECIFICATIONS

COLOURLINE



ENCORE - 725



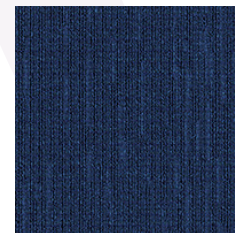
ENCORE - 742



ENCORE - 744



ENCORE - 748



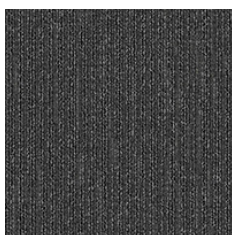
ENCORE - 758



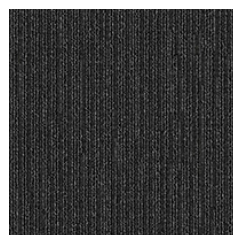
ENCORE - 761



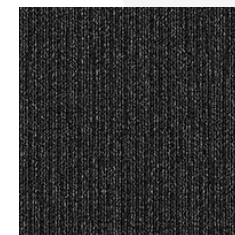
ENCORE - 766



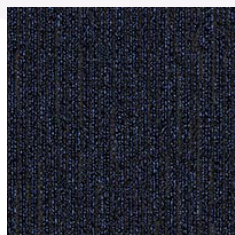
ENCORE - 770



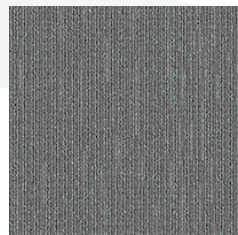
ENCORE - 771



ENCORE - 776



ENCORE - 778



ENCORE - 775



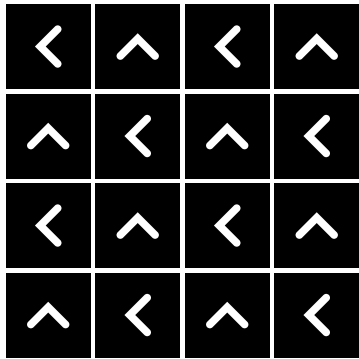
ENCORE - 791



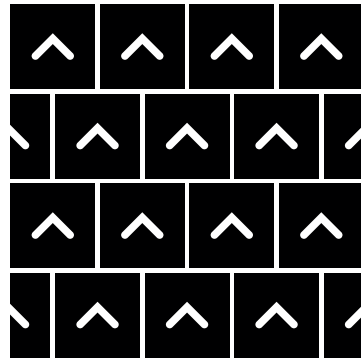


HOW TO INSTALL

QUARTER TURN



BRICK





Standard
CARPETS

www.standardcarpets.com