



EPISODES



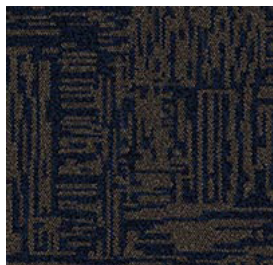
<b>CONSTRUCTION</b>	LOOP
<b>PILE FIBER COMPOSITION</b>	100% Nylon
<b>YARN TYPE</b>	BCF
<b>DYE METHOD</b>	Solution Dyed
<b>PILE WEIGHT</b>	530g/m <sup>2</sup>
<b>NUMBER OF TUFTS</b>	197000/m <sup>2</sup>
<b>TUFTING GAUGE</b>	1/10"
<b>PRIMARY BACKING</b>	Non-Woven
<b>SECONDARY BACKING</b>	Stable Shield - 100% Vinyl
<b>TILE SIZE</b>	50 cm x 50 cm (19.6" x 19.6")
<b>PILE HEIGHT</b>	3.0 mm
<b>TOTAL HEIGHT</b>	6.0 mm
<b>PILE TREATMENT</b>	INVISTA Anti-Soil Treatment, Anti-Microbial (optional)
<b>RECOMMENDED INSTALLATION</b>	Quarter Turn or Brick

# SPECIFICATIONS

# COLOURLINE



EPISODES - 548



EPISODES - 557



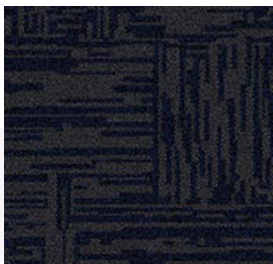
EPISODES - 6543



EPISODES - 6545



EPISODES - 6547



EPISODES - 6557



EPISODES - 6571



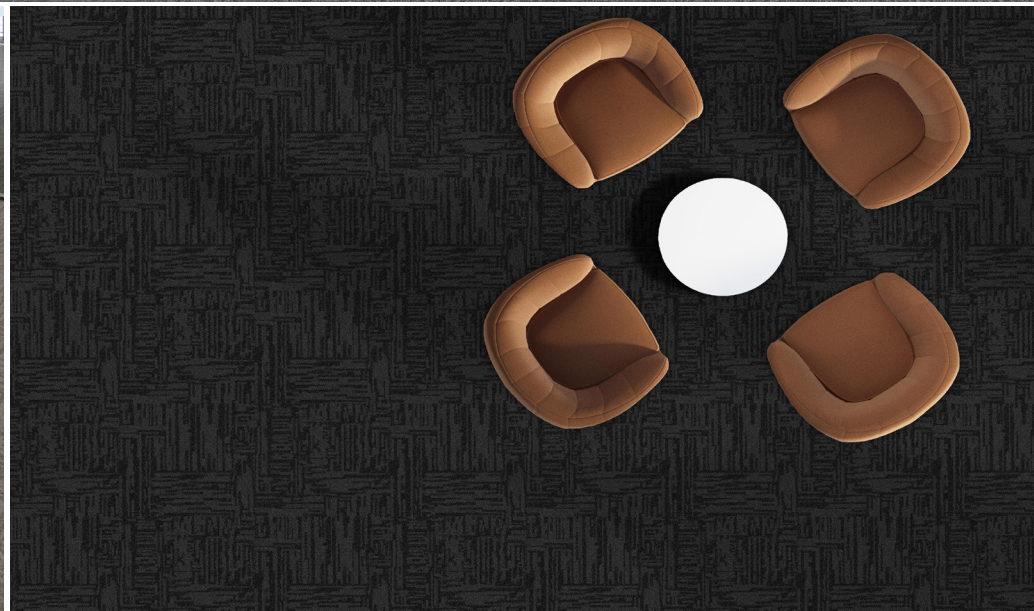
EPISODES - 6576

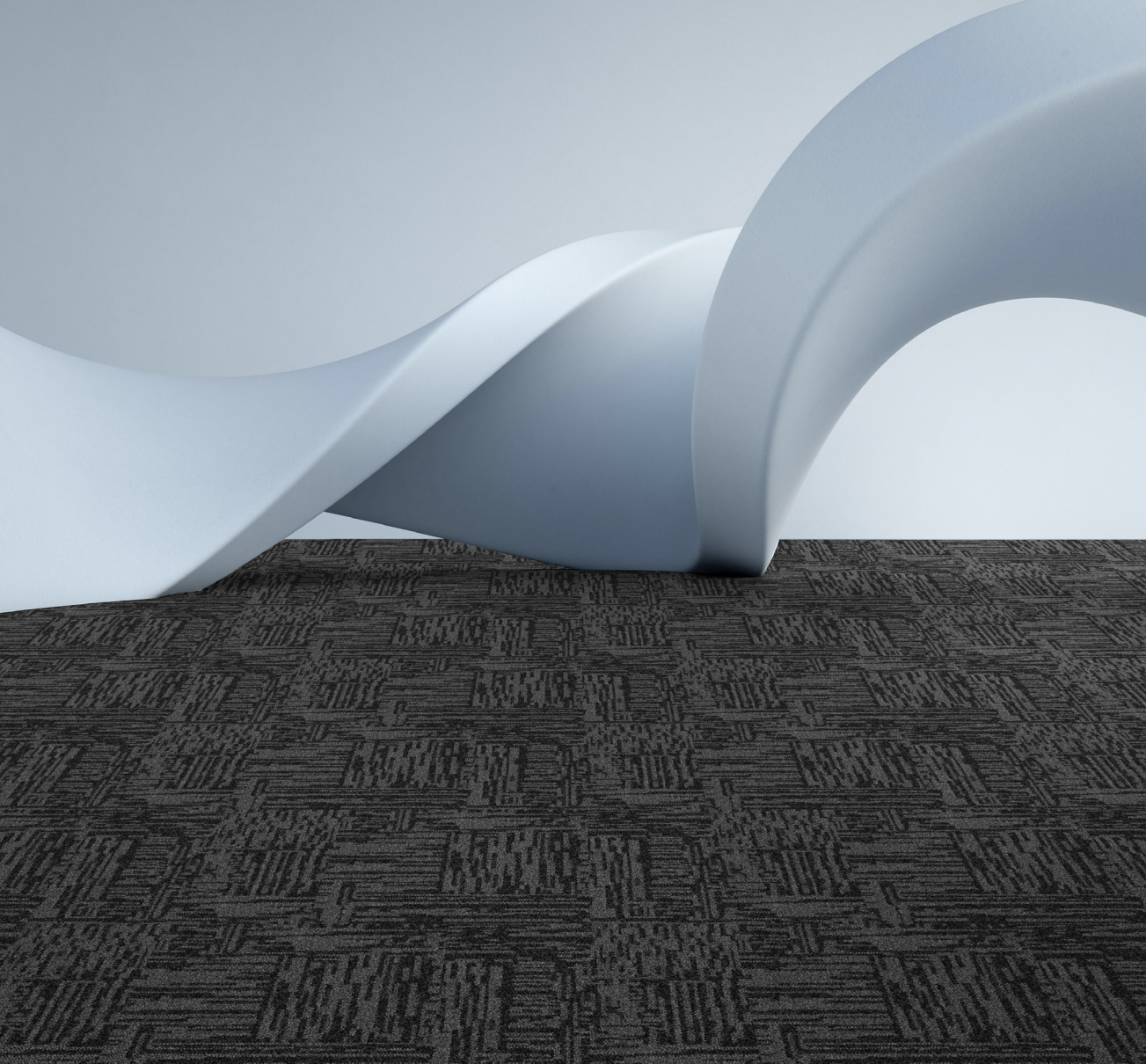


EPISODES - 6578



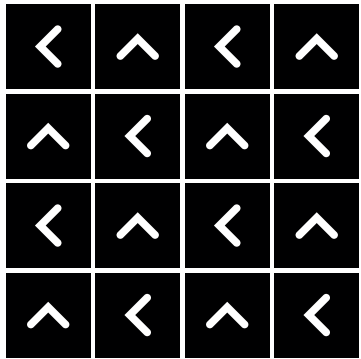
EPISODES - 6579



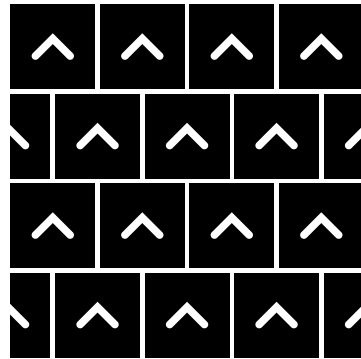


# HOW TO INSTALL

**QUARTER TURN**



**BRICK**





Standard  
*CARPETS*

[www.standardcarpets.com](http://www.standardcarpets.com)