



FAST
FORWARD



CONSTRUCTION	LOOP
PILE FIBER COMPOSITION	100% Solution Dyed Nylon
YARN TYPE	Cable
PILE WEIGHT	520g/m ²
NUMBER OF TUFTS	169850 /m ²
TUFTING GAUGE	1/10"
PRIMARY BACKING	Non-Woven
SECONDARY BACKING	Stable Shield 100% Vinyl
TILE SIZE	50 cm x 50 cm (19.6" X 19.6")
PILE HEIGHT	2.5 mm / 5.5 mm
TOTAL HEIGHT	8.0 mm
PILE TREATMENT	INVISTA Anti - Soil
RECOMMENDED INSTALLATION	Quarter Turn

S P E C I F I C A T I O N S

COLOURLINE



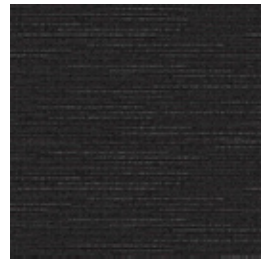
FAST FORWARD 658



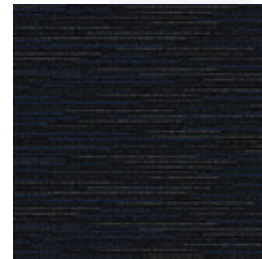
FAST FORWARD 674



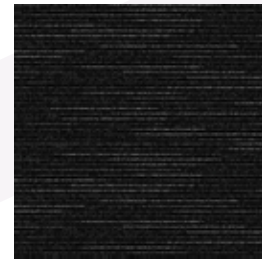
FAST FORWARD 675



FAST FORWARD 677



FAST FORWARD 678

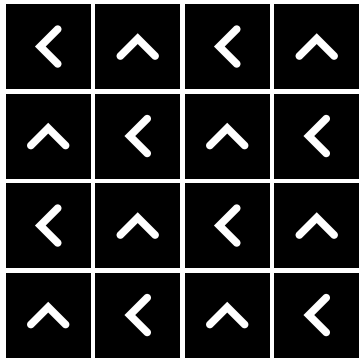


FAST FORWARD 679



HOW TO INSTALL

QUARTER TURN





Standard
CARPETS

www.standardcarpets.com