




FASTDATE



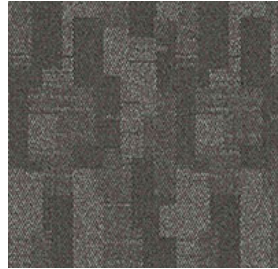
<b>CONSTRUCTION</b>	LOOP
<b>PILE FIBER COMPOSITION</b>	100% Nylon (Polyamide 6)
<b>YARN TYPE</b>	CABLE
<b>DYE METHOD</b>	Solution Dyed
<b>PILE WEIGHT</b>	550g/m <sup>2</sup>
<b>NUMBER OF TUFTS</b>	169580/m <sup>2</sup>
<b>TUFTING GAUGE</b>	1/10"
<b>PRIMARY BACKING</b>	Non-Woven
<b>SECONDARY BACKING</b>	Stable Shield - 100% Vinyl
<b>OPTIONAL BACKING</b>	Recova-PU Cushion , EcoShield-100% Recycled Vinyl
<b>TILE SIZE</b>	50 cm x 50 cm (19.6 in x 19.6 in)
<b>PILE HEIGHT</b>	2.5 mm - 5.5 mm
<b>TOTAL HEIGHT</b>	8.00 mm
<b>PILE TREATMENT</b>	Walk Of Fame, Anti-Microbial (optional)
<b>RECOMMENDED INSTALLATION</b>	Quarter Turn

# SPECIFICATIONS

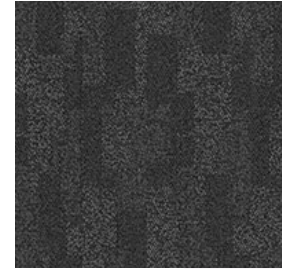
# COLOURLINE



FAST DATE - 672



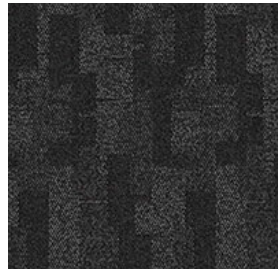
FAST DATE - 673



FAST DATE - 675



FAST DATE - 676



FAST DATE - 677



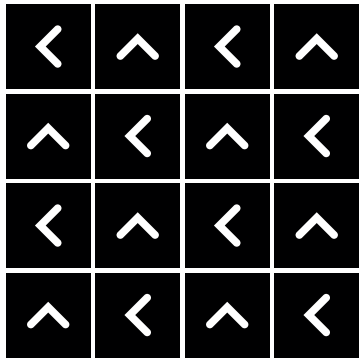
FAST DATE - 678





# HOW TO INSTALL

## QUARTER TURN





Standard  
*CARPETS*

[www.standardcarpets.com](http://www.standardcarpets.com)