

FOREST II





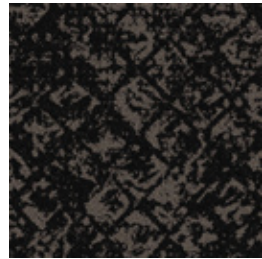
SPECIFICATIONS

CONSTRUCTION	LOOP
PILE FIBER COMPOSITION	100% Nylon (Polyamide 6)
YARN TYPE	Cable
DYE METHOD	Solution Dyed
PILE WEIGHT	750 g/m ²
NUMBER OF TUFTS	237000/m ²
TUFTING GAUGE	1/10"
PRIMARY BACKING	Non-Woven
SECONDARY BACKING	StableShield - 100% Vinyl
OPTIONAL BACKING	Recova-PU Cushion , EcoShield-100% Recycled Vinyl
TILE SIZE	50 cm x 50 cm
PILE HEIGHT	2.5 mm / 5.5 mm
TOTAL HEIGHT	7.5 mm
PILE TREATMENT	INVISTA Anti-Soil Treatment, Anti-Microbial (Optional)
RECOMMENDED INSTALLATION	Quarter Turn or Brick

COLOURLINE



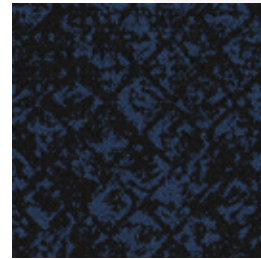
Forest II - 745



Forest II - 748



Forest II - 749



Forest II - 755



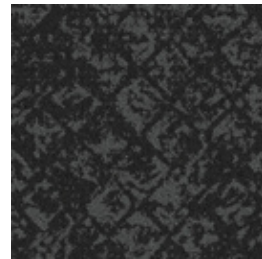
Forest II - 773



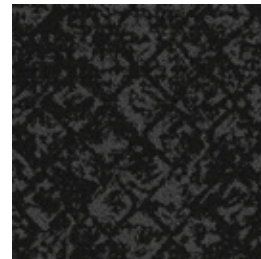
Forest II - 775



Forest II - 776



Forest II - 778



Forest II - 779



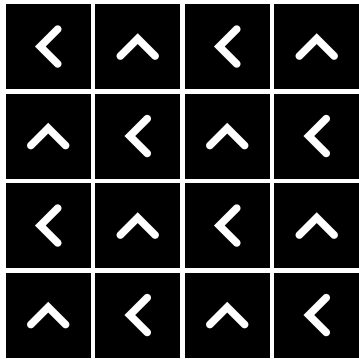
Forest II - 795



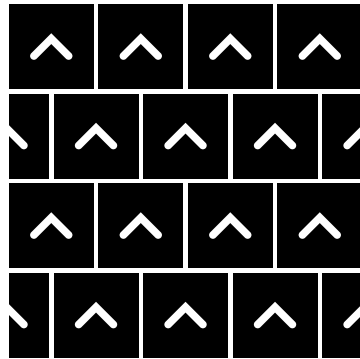


HOW TO INSTALL

QUARTER TURN



BRICK





Standard
CARPETS

www.standardcarpets.com