




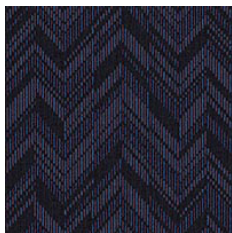
HALIFAX



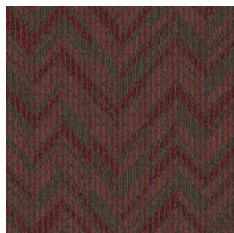
CONSTRUCTION	LOOP
PILE FIBER COMPOSITION	100% Nylon (Polyamide 6)
YARN TYPE	BCF
DYE METHOD	Solution Dyed
PILE WEIGHT	750g/m ²
NUMBER OF TUFTS	251220/m ²
TUFTING GAUGE	1/12"
PRIMARY BACKING	Non-Woven
SECONDARY BACKING	Stable Shield - 100% Vinyl
OPTIONAL BACKING	Recova-PU Cushion , EcoShield-100% Recycled Vinyl
TILE SIZE	50 cm x 50 cm
PILE HEIGHT	3.0 mm / 6.5 mm
TOTAL HEIGHT	8.5 mm
PILE TREATMENT	INVISTA Anti-Soil Treatment, Anti-Microbial (optional)
RECOMMENDED INSTALLATION	Quarter Turn or Brick

SPECIFICATIONS

COLOURLINE



HALIFAX - 735



HALIFAX - 745



HALIFAX - 747



HALIFAX - 748



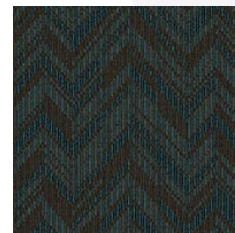
HALIFAX - 749



HALIFAX - 758



HALIFAX - 764



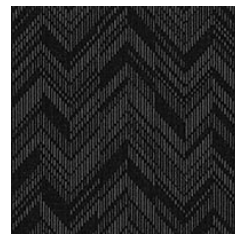
HALIFAX - 766



HALIFAX - 776



HALIFAX - 777



HALIFAX - 778



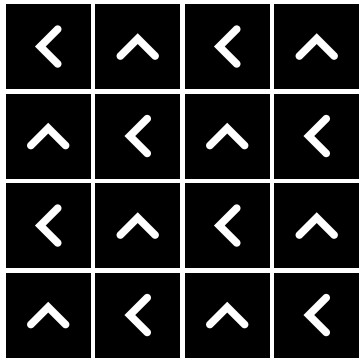
HALIFAX - 779



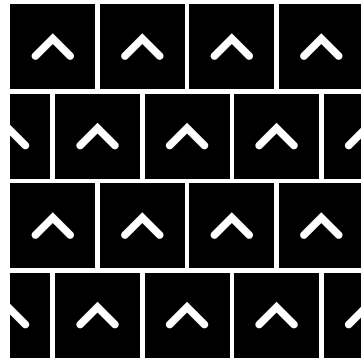


HOW TO INSTALL

QUARTER TURN



BRICK





Standard
CARPETS

www.standardcarpets.com