

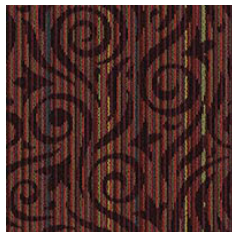
IRIS



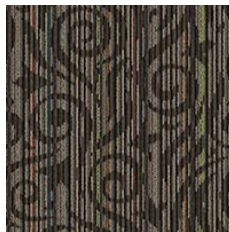
| | |
|---------------------------------|--|
| CONSTRUCTION | VLOC |
| PILE FIBER COMPOSITION | 100% Nylon (Polyamide 6) |
| YARN TYPE | BCF |
| DYE METHOD | Solution Dyed |
| PILE WEIGHT | 750g/m ² |
| NUMBER OF TUFTS | 260700/m ² |
| TUFTING GAUGE | 1/12" |
| PRIMARY BACKING | Non-Woven |
| BACKING STRUCTURES | Stable Shield - 100% Vinyl |
| TILE SIZE | 50 cm x 50 cm |
| PILE HEIGHT | 3.0mm / 5.0mm |
| TOTAL HEIGHT | 7.0mm |
| PILE TREATMENT | INVISTA Anti-Soil Treatment, Anti-Microbial (optional) |
| RECOMMENDED INSTALLATION | Quarter Turn or Brick |

S P E C I F I C A T I O N S

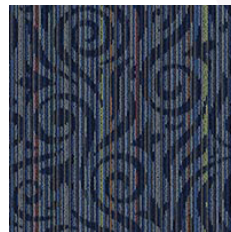
COLOURLINE



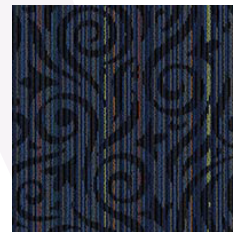
IRIS - 626



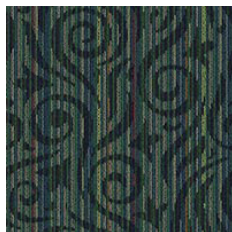
IRIS - 648



IRIS - 658



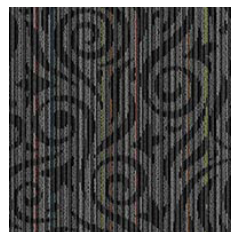
IRIS - 659



IRIS - 664



IRIS - 673



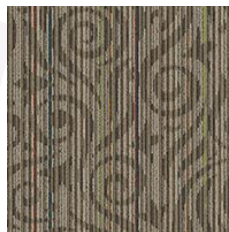
IRIS - 674



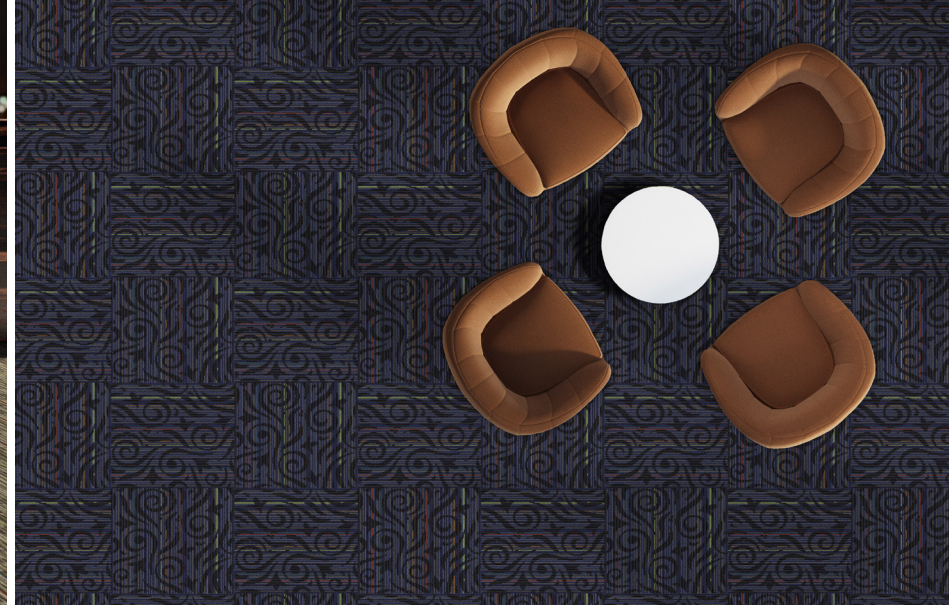
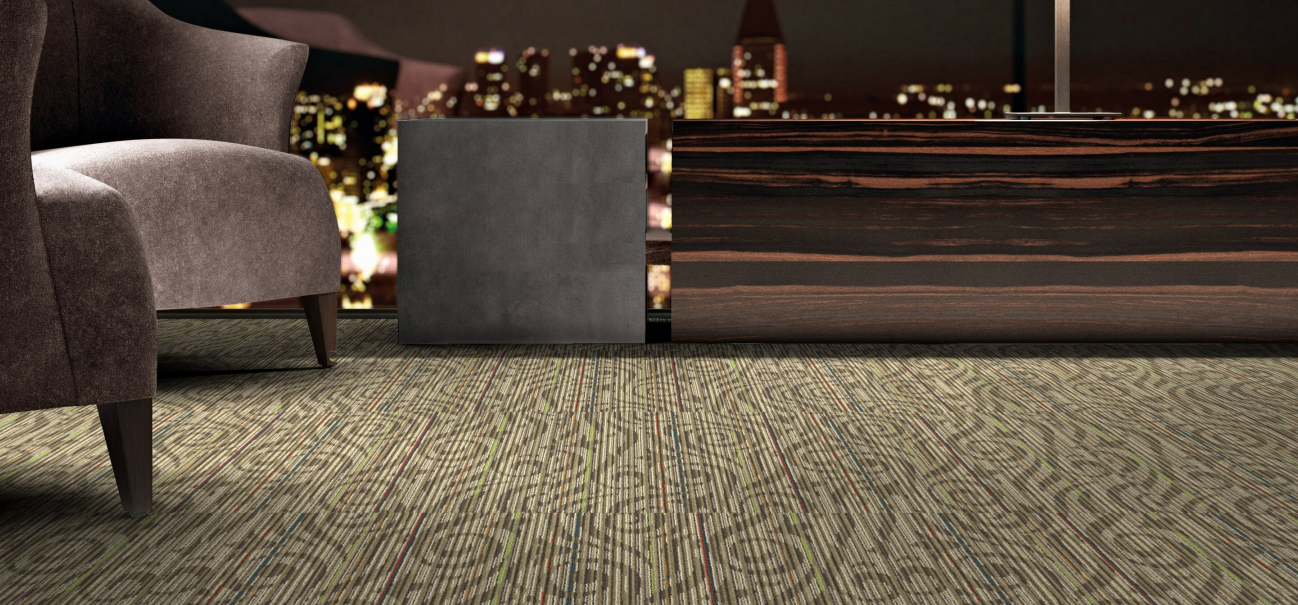
IRIS - 675



IRIS - 679



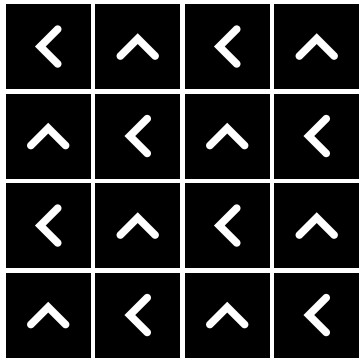
IRIS - 695



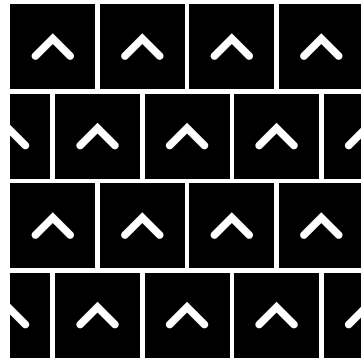


HOW TO INSTALL

QUARTER TURN



BRICK





Standard
CARPETS

www.standardcarpets.com