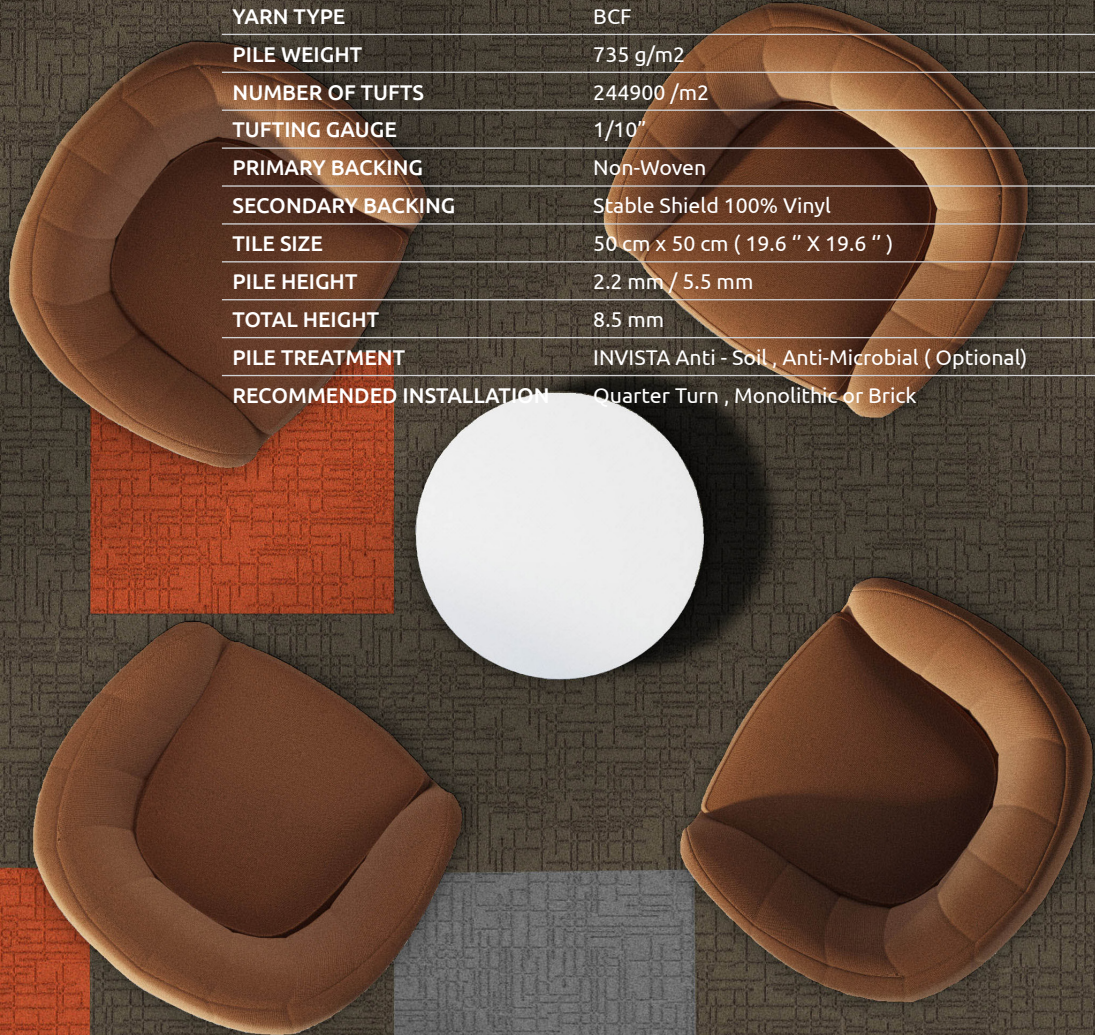




MANHATTAN



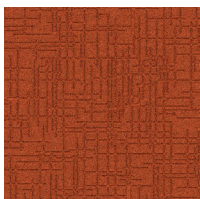
CONSTRUCTION	LOOP
PILE FIBER COMPOSITION	100% Solution Dyed Nylon ( Polyamide 6)
YARN TYPE	BCF
PILE WEIGHT	735 g/m2
NUMBER OF TUFTS	244900 /m2
TUFTING GAUGE	1/10"
PRIMARY BACKING	Non-Woven
SECONDARY BACKING	Stable Shield 100% Vinyl
TILE SIZE	50 cm x 50 cm ( 19.6 " X 19.6 " )
PILE HEIGHT	2.2 mm / 5.5 mm
TOTAL HEIGHT	8.5 mm
PILE TREATMENT	INVISTA Anti - Soil , Anti-Microbial ( Optional)
RECOMMENDED INSTALLATION	Quarter Turn , Monolithic or Brick



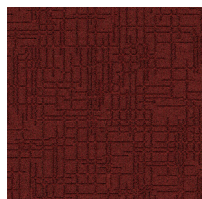
# SPECIFICATIONS



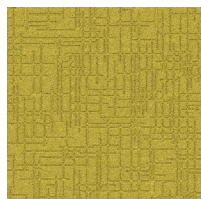
# COLOURLINE



MANHATTAN-722



MANHATTAN-726



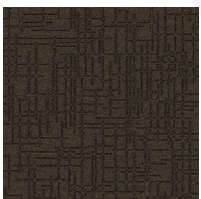
MANHATTAN-736



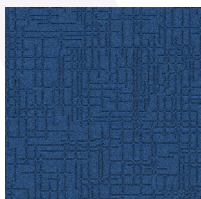
MANHATTAN-745



MANHATTAN-746



MANHATTAN-747



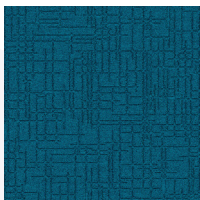
MANHATTAN-753



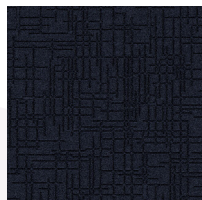
MANHATTAN-754



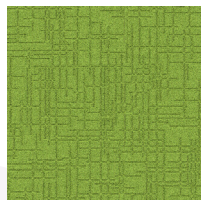
MANHATTAN-755



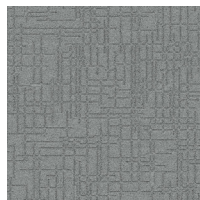
MANHATTAN-756



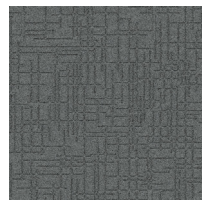
MANHATTAN-757



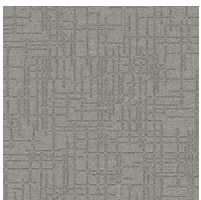
MANHATTAN-766



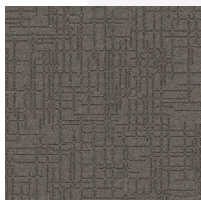
MANHATTAN-770



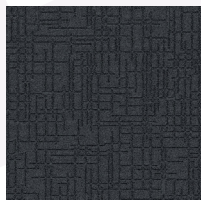
MANHATTAN-771



MANHATTAN-772



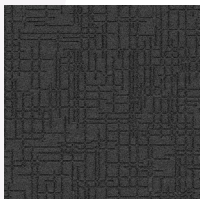
MANHATTAN-773



MANHATTAN-774



MANHATTAN-775



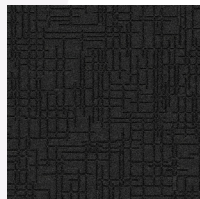
MANHATTAN-776



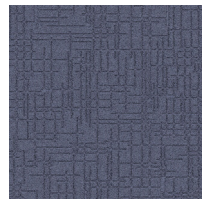
MANHATTAN-777



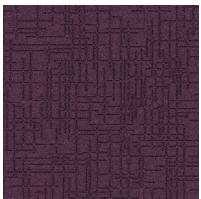
MANHATTAN-778



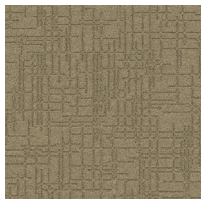
MANHATTAN-779



MANHATTAN-783

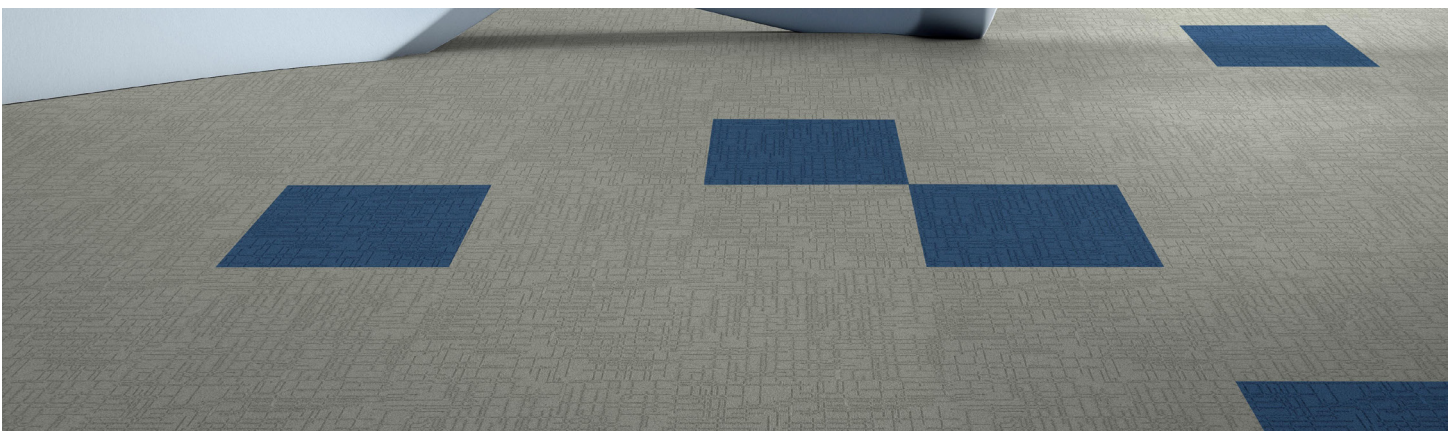


MANHATTAN-786



MANHATTAN-796





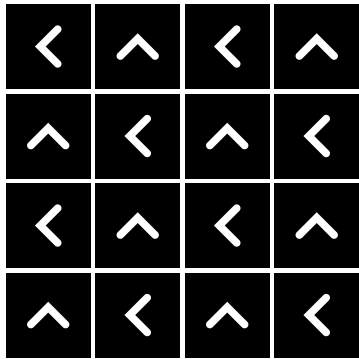




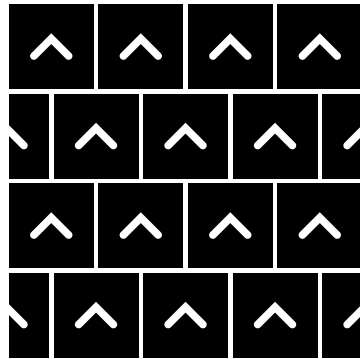


# HOW TO INSTALL

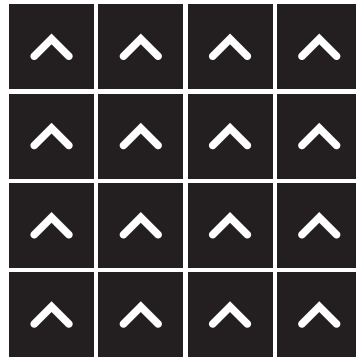
**QUARTER TURN**



**BRICK**



**MONOLITHIC**







Standard  
*CARPETS*

[www.standardcarpets.com](http://www.standardcarpets.com)