



M A N T R A



CONSTRUCTION	VLOC
PILE FIBER COMPOSITION	100% Nylon (Polyamide 6)
YARN TYPE	CABLE
DYE METHOD	Solution Dyed
PILE WEIGHT	780g/m ²
NUMBER OF TUFTS	260700/m ²
TUFTING GAUGE	1/10"
PRIMARY BACKING	Non-Woven
SECONDARY BACKING	Stable Shield - 100% Vinyl
OPTIONAL BACKING	Recova-PU Cushion , EcoShield-100% Recycled Vinyl
TILE SIZE	50 cm x 50 cm
PILE HEIGHT	3.0mm / 4.0mm
TOTAL HEIGHT	8.00mm
PILE TREATMENT	INVISTA Anti-Soil Treatment, Anti-Microbial (optional)
RECOMMENDED INSTALLATION	Quarter Turn or Brick

S P E C I F I C A T I O N S

COLOURLINE



MANTRA - CC-726



MANTRA - CC-746



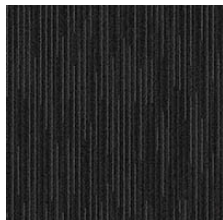
MANTRA - CC-747



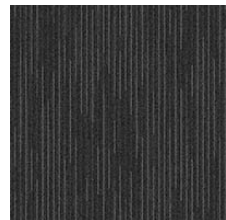
MANTRA - CC-748



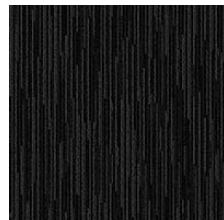
MANTRA - CC-759



MANTRA - CC-776



MANTRA - CC-777



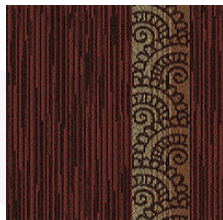
MANTRA - CC-779



MANTRA - CC-794



MANTRA - CC-795



MANTRA - 726



MANTRA - 746



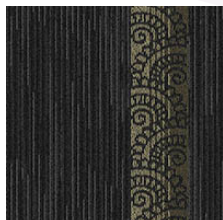
MANTRA - 747



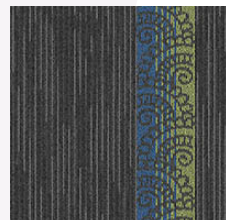
MANTRA - 748



MANTRA - 759



MANTRA - 776



MANTRA - 777



MANTRA - 779



MANTRA - 794



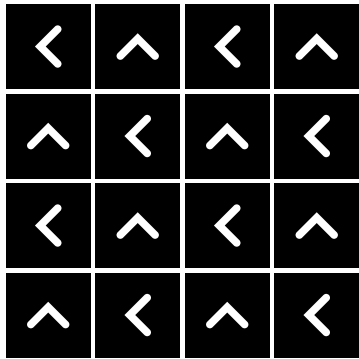
MANTRA - 795



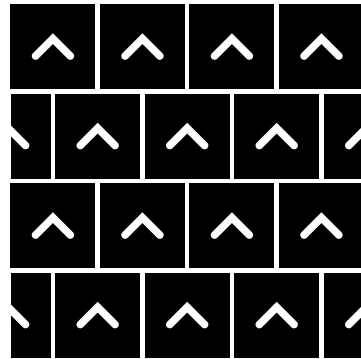


HOW TO INSTALL

QUARTER TURN



BRICK





Standard
CARPETS

www.standardcarpets.com