

A modern office lounge area featuring a dark, patterned carpet, a beige leather sofa, and a white shelving unit. A large purple graphic overlay with a repeating geometric pattern is positioned in the upper left corner. The background shows a hallway with glass-walled offices and a view of a city skyline through a large window.

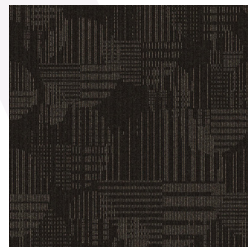
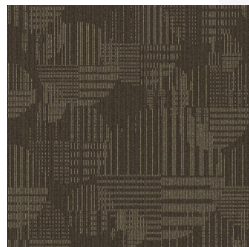
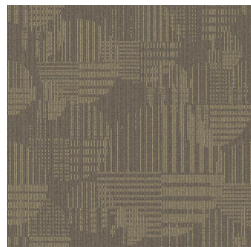
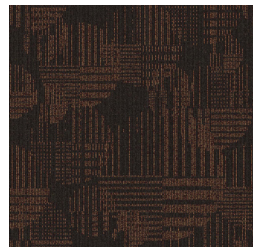
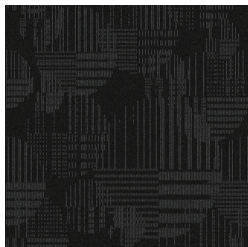
# MODERN BOUTIQUE

<b>CONSTRUCTION</b>	LOOP
<b>PILE FIBER COMPOSITION</b>	100% Nylon ( Polyamide 6 )
<b>YARN TYPE</b>	Cable
<b>DYE METHOD</b>	Solution Dyed
<b>PILE WEIGHT</b>	610 g/m2
<b>NUMBER OF TUFTS</b>	194340 /m2
<b>TUFTING GAUGE</b>	1/12"
<b>PRIMARY BACKING</b>	Non-Woven
<b>SECONDARY BACKING</b>	Stable Shield - 100% Vinyl
<b>OPTIONAL BACKING</b>	Recova-PU Cushion , EcoShield-100% Recycled Vinyl
<b>TILE SIZE</b>	50 cm x 50 cm
<b>PILE HEIGHT</b>	2.5 mm / 5.3 mm
<b>TOTAL HEIGHT</b>	8.0 mm
<b>PILE TREATMENT</b>	INVISTA Anti-Soil Treatment, Anti-Microbial (optional)
<b>RECOMMENDED INSTALLATION</b>	Quarter Turn or Brick

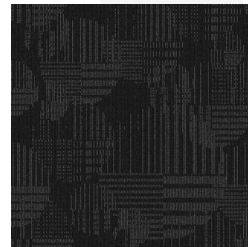
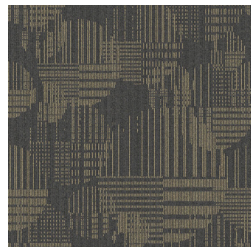
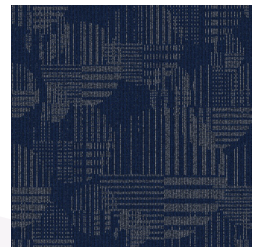
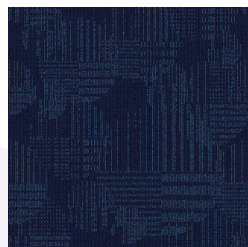


SPECIFICATIONS

# COLOURLINE

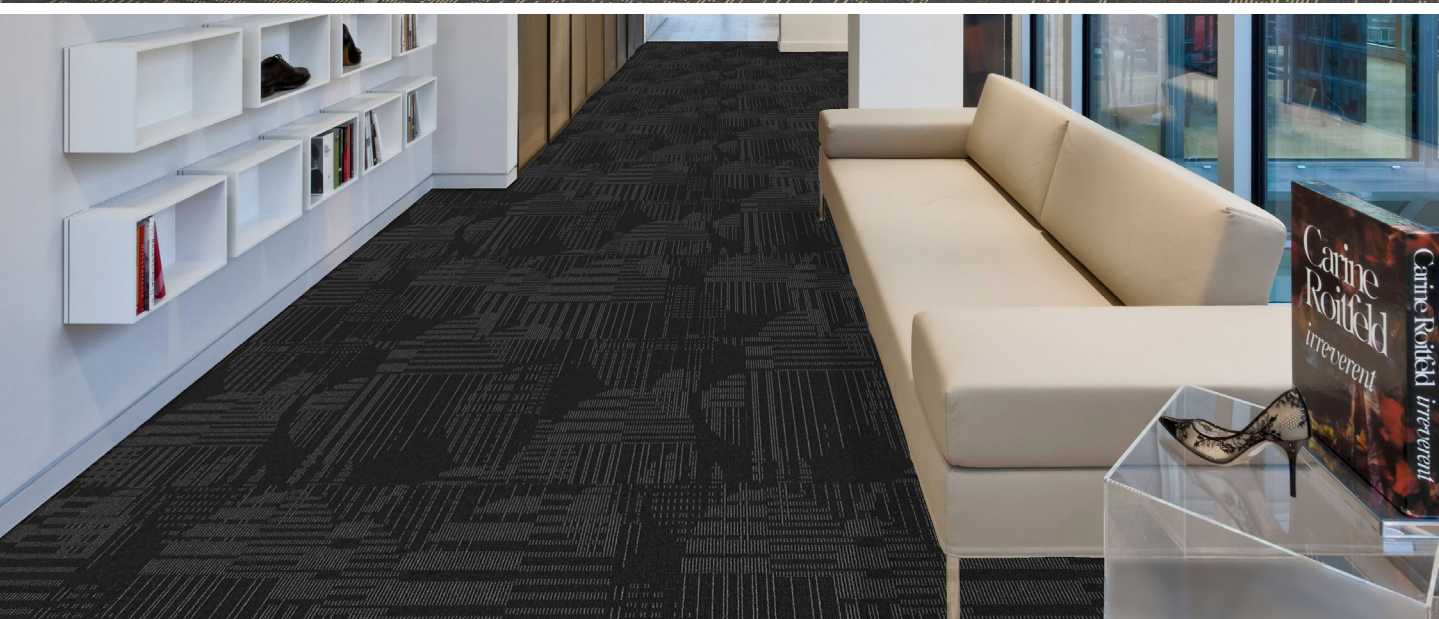


MODERN BOUTIQUE - 678 MODERN BOUTIQUE - 627 MODERN BOUTIQUE - 646 MODERN BOUTIQUE - 647 MODERN BOUTIQUE - 648



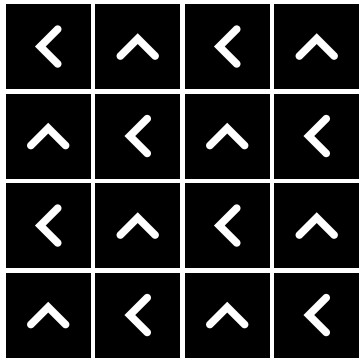
MODERN BOUTIQUE - 657 MODERN BOUTIQUE - 658 MODERN BOUTIQUE - 674 MODERN BOUTIQUE - 675 MODERN BOUTIQUE - 677



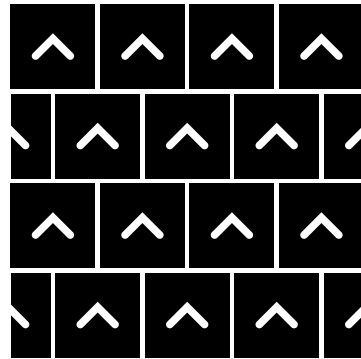


# HOW TO INSTALL

**QUARTER TURN**



**BRICK**





Standard  
*CARPETS*

[www.standardcarpets.com](http://www.standardcarpets.com)