



NEW HOPE





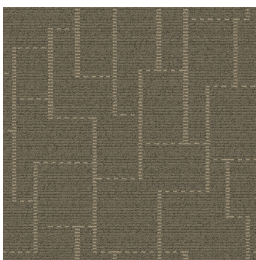
<b>CONSTRUCTION</b>	Loop
<b>PILE FIBER COMPOSITION</b>	100% Nylon ( Polyamide 6 )
<b>YARN TYPE</b>	Cable
<b>DYE METHOD</b>	Solution Dyed
<b>PILE WEIGHT</b>	610g/m <sup>2</sup>
<b>NUMBER OF TUFTS</b>	208560/m <sup>2</sup>
<b>TUFTING GAUGE</b>	1/12"
<b>PRIMARY BACKING</b>	Non-Woven
<b>SECONDARY BACKING</b>	Stable Shield - 100% Vinyl
<b>OPTIONAL BACKING</b>	Recova-PU Cushion , EcoShield-100% Recycled Vinyl
<b>TILE SIZE</b>	50 cm x 50 cm
<b>PILE HEIGHT</b>	2.3 mm / 5.5 mm
<b>TOTAL HEIGHT</b>	8.0 mm
<b>PILE TREATMENT</b>	INVISTA Anti-Soil Treatment, Anti-Microbial (optional)
<b>RECOMMENDED INSTALLATION</b>	Quarter Turn or Brick

# SPECIFICATIONS





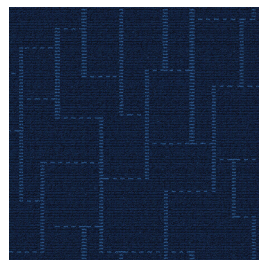
# COLOURLINE



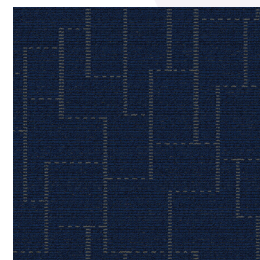
NEW HOPE - 645



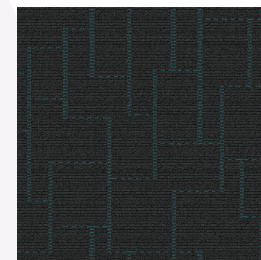
NEW HOPE - 648



NEW HOPE - 654



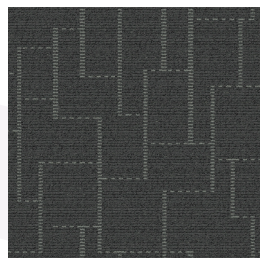
NEW HOPE - 657



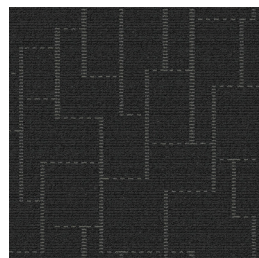
NEW HOPE - 664



NEW HOPE - 667



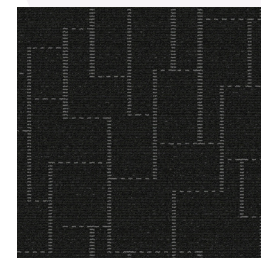
NEW HOPE - 675



NEW HOPE - 676



NEW HOPE - 677



NEW HOPE - 679





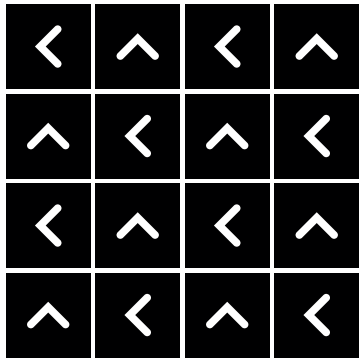




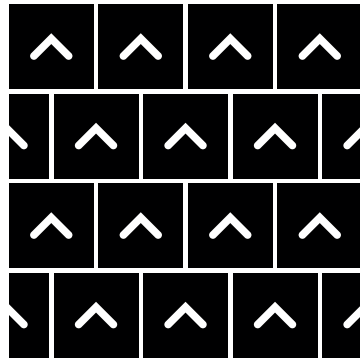


# HOW TO INSTALL

**QUARTER TURN**



**BRICK**







Standard  
*CARPETS*

[www.standardcarpets.com](http://www.standardcarpets.com)