



NEXUS



CONSTRUCTION	LOOP
PILE FIBER COMPOSITION	100% Solution Dyed Nylon (Polyamide 6)
YARN TYPE	CABLE
PILE WEIGHT	700 g/m ²
NUMBER OF TUFTS	250690 /m ²
TUFTING GAUGE	1/12"
PRIMARY BACKING	Non-Woven
SECONDARY BACKING	Stable Shield 100% Vinyl
TILE SIZE	50 cm x 50 cm (19.6" X 19.6")
PILE HEIGHT	3.0mm / 5.5 mm
TOTAL HEIGHT	8.0 mm
PILE TREATMENT	VISTA Anti - Soil , Anti-Microbial (Optional)
RECOMMENDED INS	Quarter Turn or Brick

SPECIFICATIONS

COLOURLINE



NEXUS-746



NEXUS-747



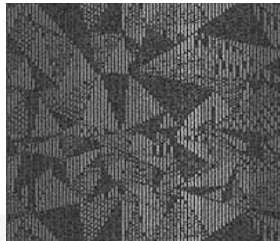
NEXUS-748



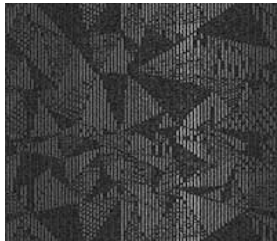
NEXUS-757



NEXUS-758



NEXUS-777



NEXUS-778



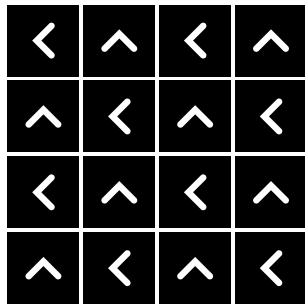
NEXUS-779



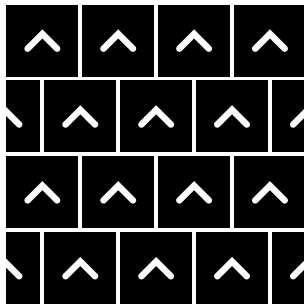


HOW TO INSTALL

QUARTER TURN



BRICK





Standard
CARPETS

www.standardcarpets.com