



PURE



CONSTRUCTION	Loop
PILE FIBER COMPOSITION	100% Nylon (Polyamide 6)
YARN TYPE	CABLE
DYE METHOD	Solution Dyed
PILE WEIGHT	750/m2
NUMBER OF TUFTS	255960/m2
TUFTING GAUGE	1/12"
PRIMARY BACKING	Non-Woven
BACKING STRUCTURES	Stable Shield - 100% Vinyl
TILE SIZE	50 cm x 50 cm
PILE HEIGHT	2.8mm / 5.5mm
TOTAL HEIGHT	8.5mm
PILE TREATMENT	INVISTA Anti-Soil Treatment, Anti-Microbial (optional)
RECOMMENDED INSTALLATION	Quarter Turn or Brick

SPECIFICATIONS

COLOURLINE



PURE - 726



PURE - 745



PURE - 746



PURE - 747



PURE - 748



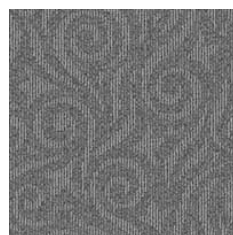
PURE - 757



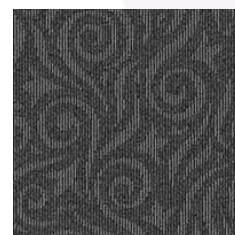
PURE - 758



PURE - 772



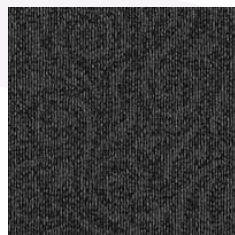
PURE - 775



PURE - 777



PURE - 778



PURE - 779



PURE - 794



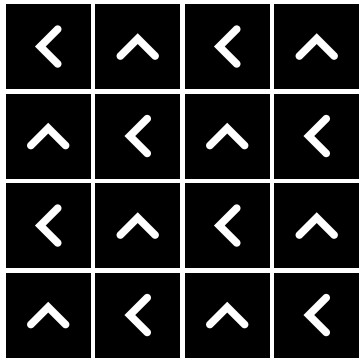
PURE - 795



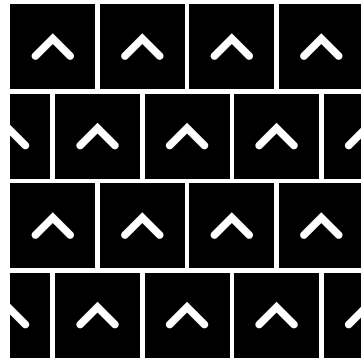


HOW TO INSTALL

QUARTER TURN



BRICK





Standard
CARPETS

www.standardcarpets.com