


A modern office interior featuring a light-colored sofa, a white desk with a computer monitor, and a patterned carpet. A large purple overlay on the left side of the image contains the text "STREET VIEW" in white, uppercase letters. The overlay also features a repeating pattern of small white icons, including location pins and squares.

# STREET VIEW



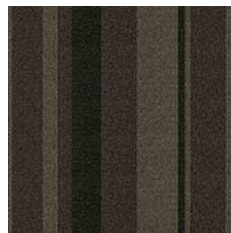
<b>CONSTRUCTION</b>	VLOC
<b>PILE FIBER COMPOSITION</b>	100% Olefin
<b>YARN TYPE</b>	BCF
<b>DYE METHOD</b>	Solution Dyed
<b>PILE WEIGHT</b>	780g/m <sup>2</sup>
<b>NUMBER OF TUFTS</b>	222780/m <sup>2</sup>
<b>TUFTING GAUGE</b>	1/12"
<b>PRIMARY BACKING</b>	Non-Woven
<b>BACKING STRUCTURES</b>	Stable Shield - 100% Vinyl
<b>TILE SIZE</b>	50 cm x 50 cm
<b>PILE HEIGHT</b>	3.5mm
<b>TOTAL PILE HEIGHT</b>	6.0mm
<b>PILE TREATMENT</b>	INVISTA Anti-Soil Treatment, Anti-Microbial (optional)
<b>RECOMMENDED INSTALLATION</b>	Quarter Turn

# SPECIFICATIONS

# COLOURLINE



STREET VIEW - 528



STREET VIEW - 546



STREET VIEW - 548



STREET VIEW - 549



STREET VIEW - 553



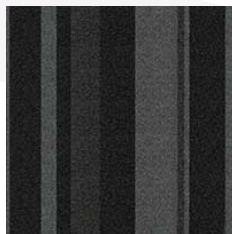
STREET VIEW - 556



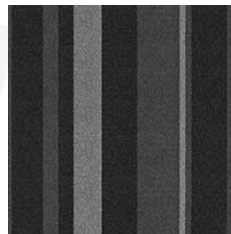
STREET VIEW - 558



STREET VIEW - 561



STREET VIEW - 576



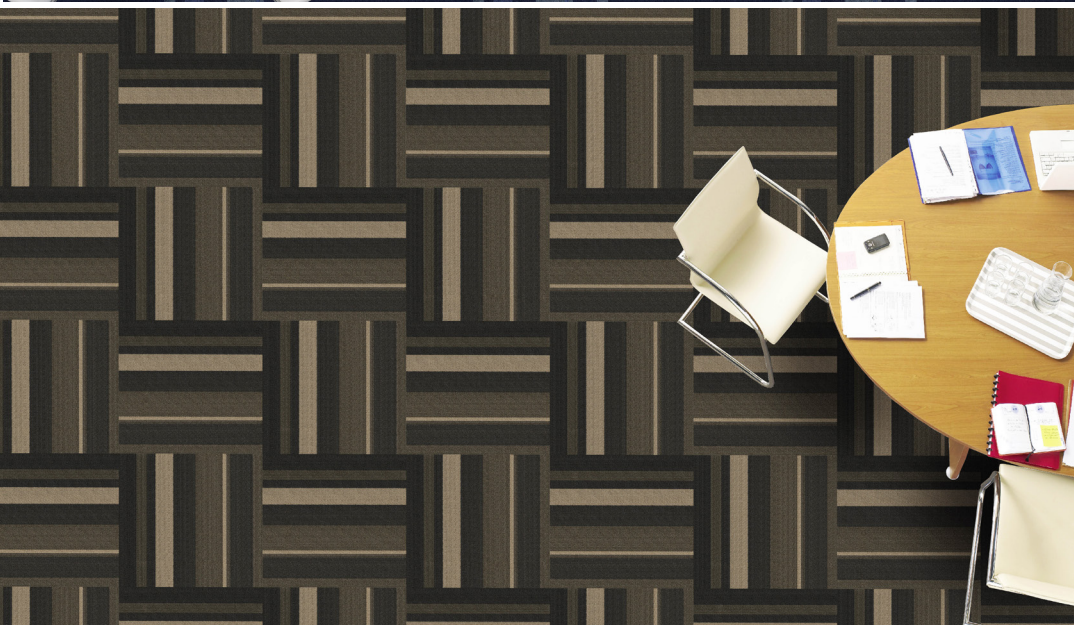
STREET VIEW - 577



STREET VIEW - 578



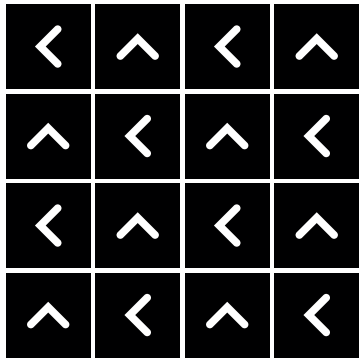
STREET VIEW - 596





# HOW TO INSTALL

## QUARTER TURN





Standard  
*CARPETS*

[www.standardcarpets.com](http://www.standardcarpets.com)