


# VICTORY HEIGHTS







Product Type	LOOP PILE TIP SHEARED
Fiber Composition	100% Nylon (Polyamide 6)
Dye Method	Solution Dyed
Pile Weight	800 g/m <sup>2</sup> (24 oz/yd <sup>2</sup> )
Number of Tufts	236400/m <sup>2</sup>
Machine Gauge	1/10"
Primary Backing	Non-Woven
Secondary Backing	StableShield-100% Vinyl
Tile Size	25 cm x 100 cm (9.8 in x 39.2 in)
Pile Height	5.0 mm
Total Tile Height	8.0 mm
Pile Treatment	INVISTA Anti-Soil Treatment, Anti-Microbial (Optional)
Recommended Installation	Ashlar, Quarter Turn or Herringbone

# SPECIFICATIONS



# COLOURLINE



Victory Heights 845



Victory Heights 846



Victory Heights 848



Victory Heights 856



Victory Heights 857



Victory Heights 858



Victory Heights 872



Victory Heights 873



Victory Heights 875



Victory Heights 876



Victory Heights 877





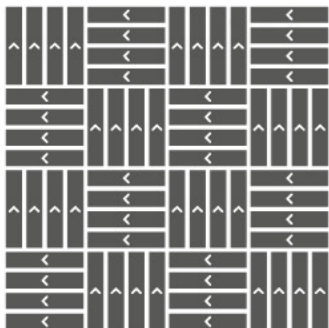




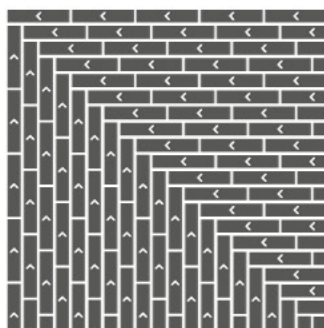


# HOW TO INSTALL

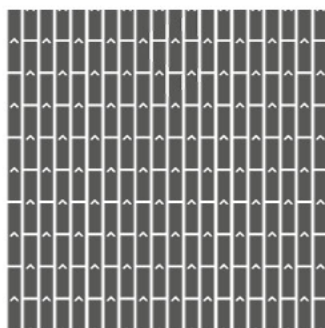
**QUARTER TURN**



**HERRINGBONE**



**ASHLAR**





Standard  
*CARPETS*

[www.standardcarpets.com](http://www.standardcarpets.com)