



X FACTOR

A black leather chair with wooden legs is positioned on a blue patterned carpet. The carpet features a repeating geometric pattern of squares and diamonds. The background is a plain, light-colored wall.

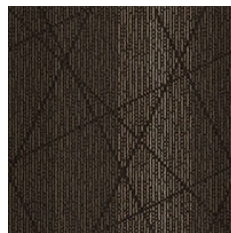
CONSTRUCTION	LOOP
PILE FIBER COMPOSITION	100% Nylon (Polyamide 6)
YARN TYPE	BCF
DYE METHOD	Solution Dyed
PILE WEIGHT	700g/m ²
NUMBER OF TUFTS	251220/m ²
TUFTING GAUGE	1/12"
PRIMARY BACKING	Non-Woven
SECONDARY BACKING	Stable Shield - 100% Vinyl
OPTIONAL BACKING	Recova-PU Cushion , EcoShield-100% Recycled Vinyl
TILE SIZE	50 cm x 50 cm
PILE HEIGHT	2.5mm - 6.0mm
TOTAL HEIGHT	8.0mm
PILE TREATMENT	INVISTA Anti-Soil Treatment, Anti-Microbial (optional)
RECOMMENDED INSTALLATION	Quarter Turn or Brick

SPECIFICATIONS

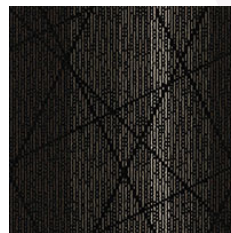
COLOURLINE



X FACTOR - 746



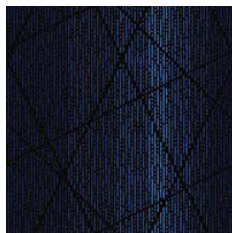
X FACTOR - 747



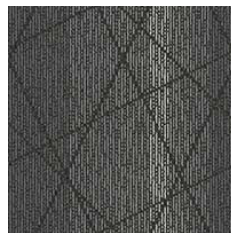
X FACTOR - 748



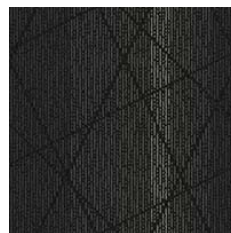
X FACTOR - 757



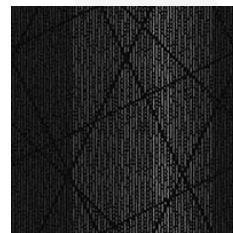
X FACTOR - 758



X FACTOR - 777

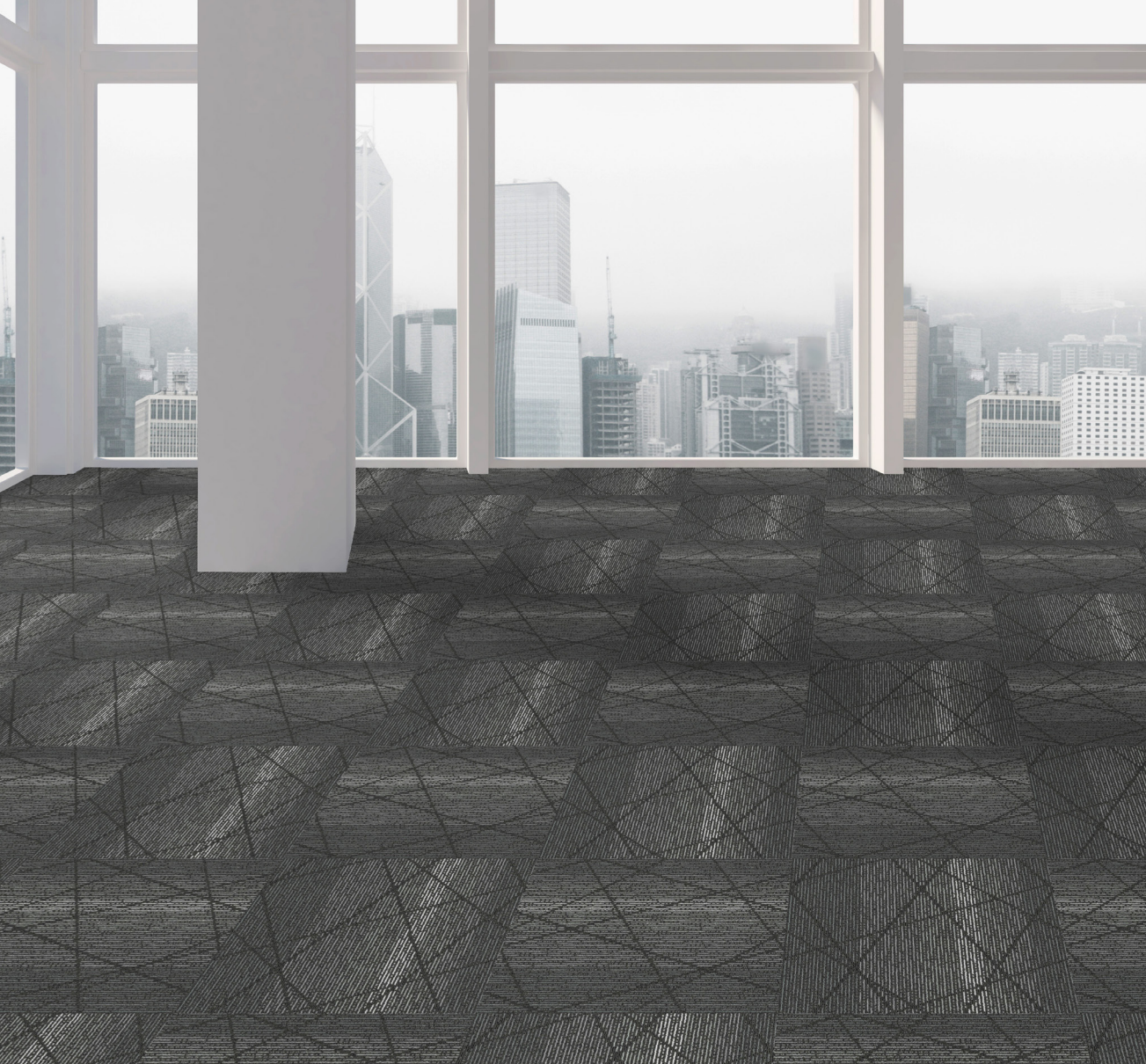


X FACTOR - 778



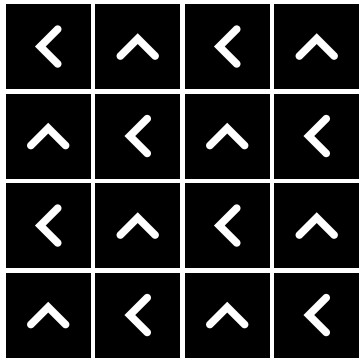
X FACTOR - 779



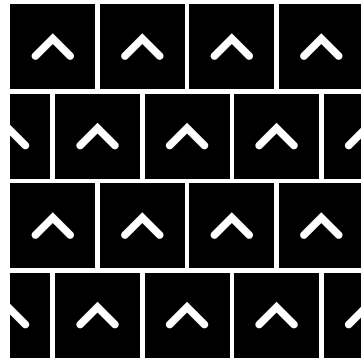


HOW TO INSTALL

QUARTER TURN



BRICK





Standard
CARPETS

www.standardcarpets.com