

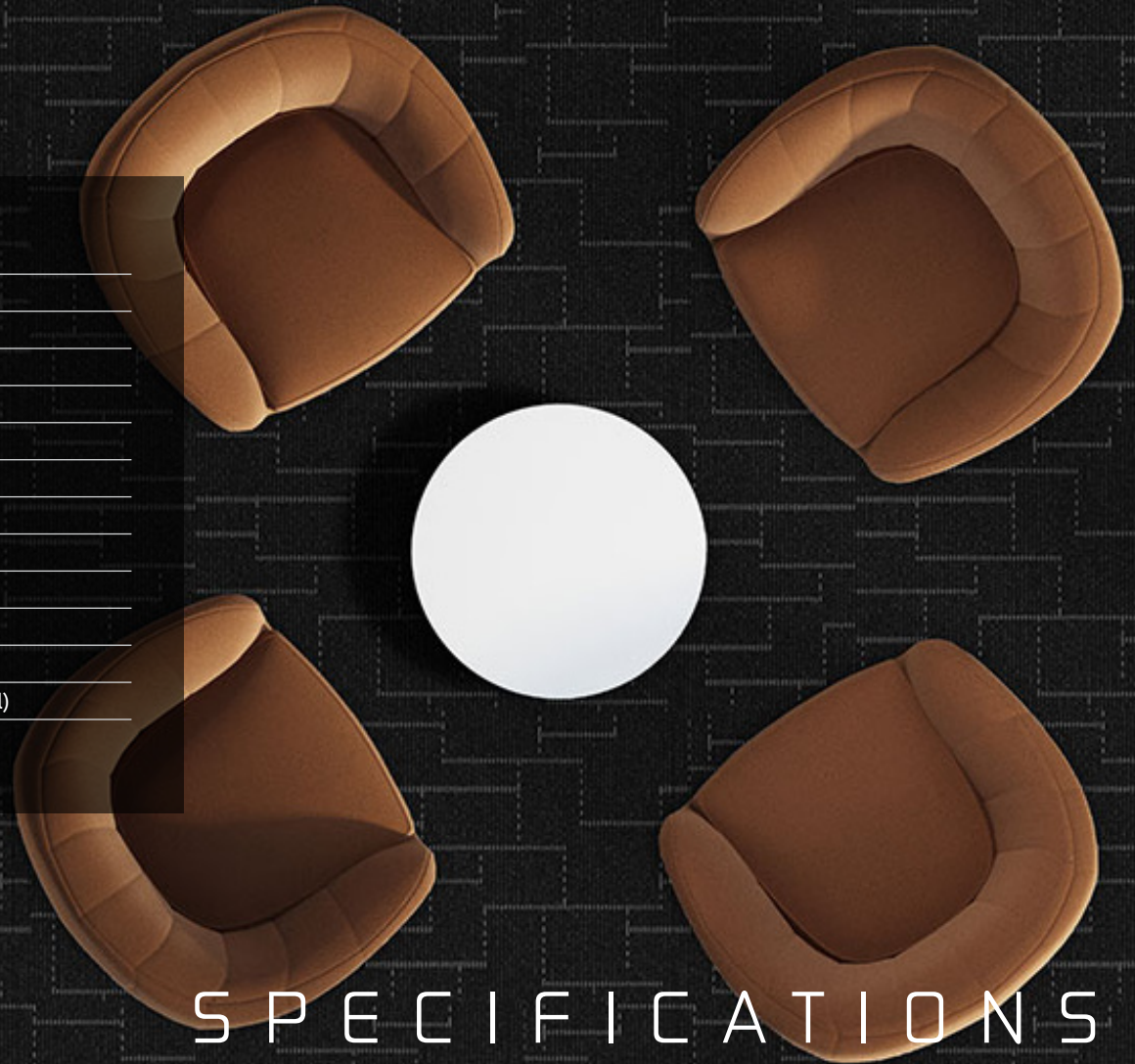
LAST CHANCE



Carine
Roitfeld
irreverent

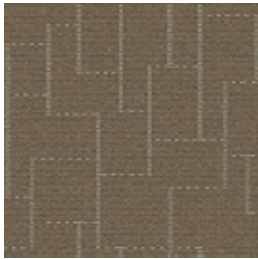


CONSTRUCTION	LOOP
PILE FIBER COMPOSITION	100% Solution Dyed Olefin
YARN TYPE	BCF
PILE WEIGHT	650 g/m2
NUMBER OF TUFTS	184860/m2
TUFTING GAUGE	1/12"
PRIMARY BACKING	Non-Woven
SECONDARY BACKING	StableShield - 100% Vinyl
OPTIONAL BACKING	Recova-PU Cushion , EcoShield-100% Recycled Vinyl
TILE SIZE	50 cm x 50 cm
PILE HEIGHT	2.3 mm / 5.5 mm
TOTAL PILE HEIGHT	8.0 mm
PILE TREATMENT	INVISTA Anti-Soil Treatment, Anti-Microbial (Optional)
RECOMMENDED INSTALLATION	Quarter Turn or Brick

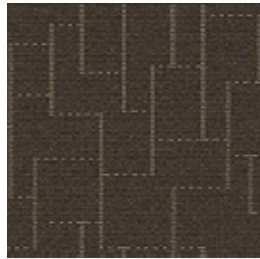


SPECIFICATIONS

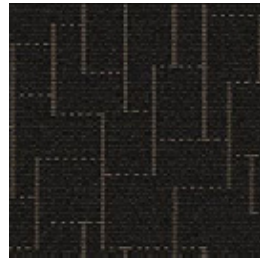
COLOURLINE



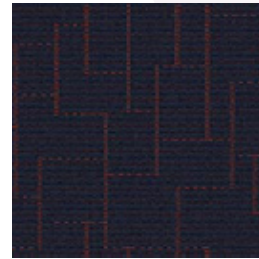
Last Chance - 647



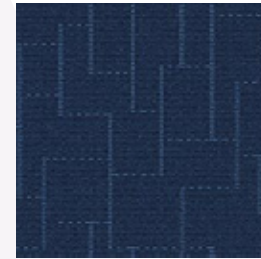
Last Chance - 648



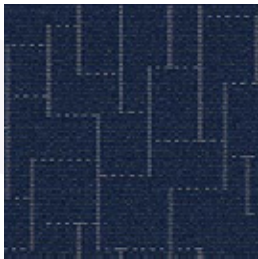
Last Chance - 649



Last Chance - 652



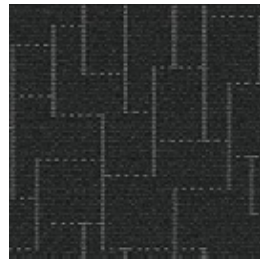
Last Chance - 655



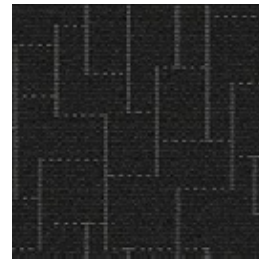
Last Chance - 657



Last Chance - 677



Last Chance - 678



Last Chance - 679

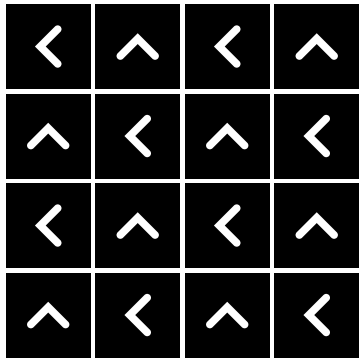


Last Chance - 685

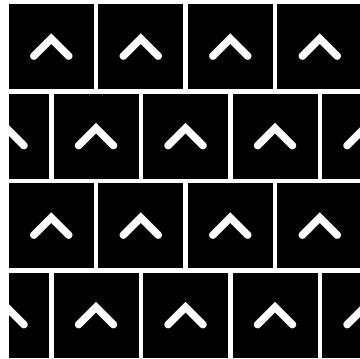


HOW TO INSTALL

QUARTER TURN



BRICK





Standard
CARPETS

www.standardcarpets.com