

STATION STREET



CONSTRUCTION	LOOP
PILE FIBER COMPOSITION	100% Solution Dyed Olefin
YARN TYPE	BCF
PILE WEIGHT	710 g/m ²
NUMBER OF TUFTS	232260/m ²
TUFTING GAUGE	1/12"
PRIMARY BACKING	Non-Woven
SECONDARY BACKING	StableShield - 100% Vinyl
OPTIONAL BACKING	Recova-PU Cushion , EcoShield-100% Recycled Vinyl
TILE SIZE	50 cm x 50 cm
PILE HEIGHT	2.5 mm / 5.5 mm
TOTAL PILE HEIGHT	7.5 mm
PILE TREATMENT	INVISTA Anti-Soil Treatment (Optional)
RECOMMENDED INSTALLATION	Quarter Turn, Brick, Ashlar, or Herringbone



SPECIFICATIONS

COLOURLINE



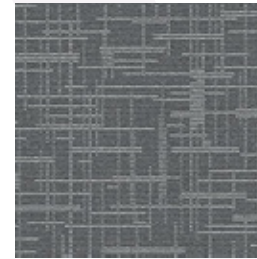
Station Street - 8847



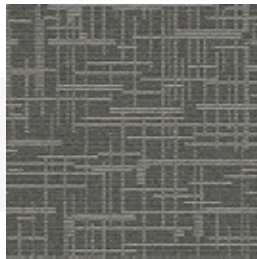
Station Street - 8863



Station Street - 8873



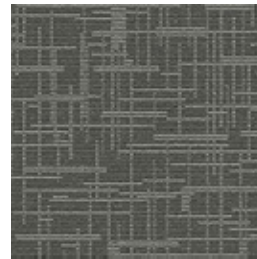
Station Street - 8874



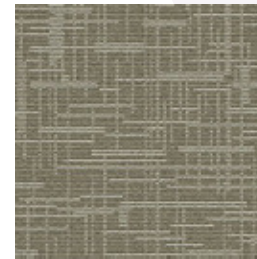
Station Street - 8875



Station Street - 8876



Station Street - 8878

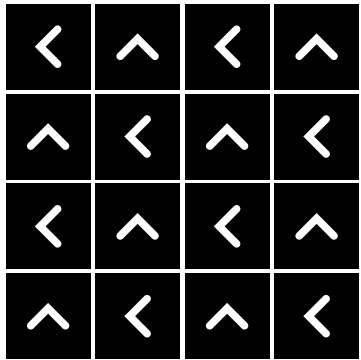


Station Street - 8896

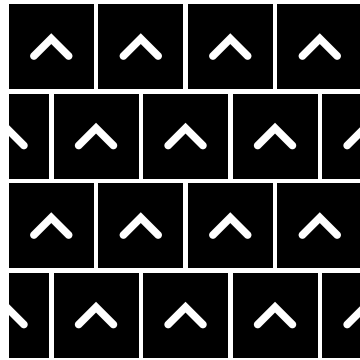


HOW TO INSTALL

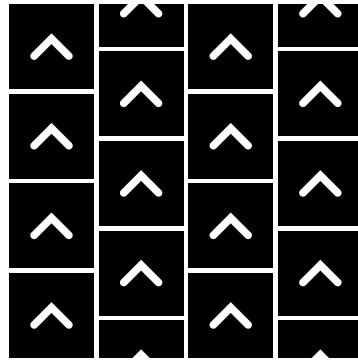
QUARTER TURN



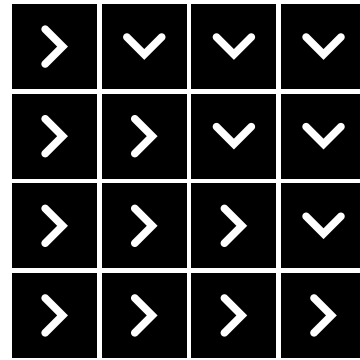
BRICK



ASHLAR



HERRINGBONE





Standard
CARPETS

www.standardcarpets.com