

TRANCE





A woman with blonde hair is sitting on a red leather chair, reading a book. She is wearing a black top, dark jeans, and grey shoes. A grey bag is slung over the chair. The chair is on a circular rug with a striped pattern. The background is a dark blue carpet with a geometric pattern.

<b>CONSTRUCTION</b>	LOOP
<b>PILE FIBER COMPOSITION</b>	100% Olefin
<b>YARN TYPE</b>	Cable
<b>DYE METHOD</b>	Solution Dyed
<b>PILE WEIGHT</b>	580g/m <sup>2</sup>
<b>NUMBER OF TUFTS</b>	169420/m <sup>2</sup>
<b>TUFTING GAUGE</b>	1/10"
<b>PRIMARY BACKING</b>	Non-Woven
<b>SECONDARY BACKING</b>	Stable Shield - 100% Vinyl
<b>OPTIONAL BACKING</b>	Recova-PU Cushion , EcoShield-100% Recycled Vinyl
<b>TILE SIZE</b>	25 cm x 100 cm ( 9.8 in x 39.2 in )
<b>PILE HEIGHT</b>	3.5 mm
<b>TOTAL PILE HEIGHT</b>	5.5 mm
<b>PILE TREATMENT</b>	INVISTA Anti-Soil Treatment, Anti-Microbial (optional)
<b>RECOMMENDED INSTALLATION</b>	Quarter Turn, Herringbone, Ashlar, Semi Ashlar or Random Plank

S P E C I F I C A T I O N S



# COLOURLINE



TRANCE - 625



TRANCE - 626



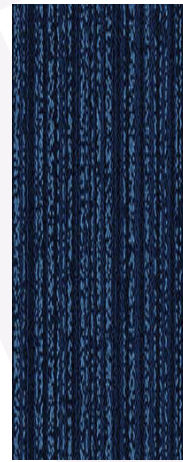
TRANCE - 645



TRANCE - 646



TRANCE - 647



TRANCE - 656



TRANCE - 658



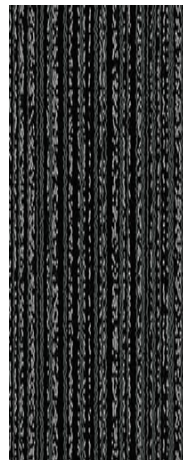
TRANCE - 666



TRANCE - 674



TRANCE - 675



TRANCE - 676



TRANCE - 677



TRANCE - 678



TRANCE - 679





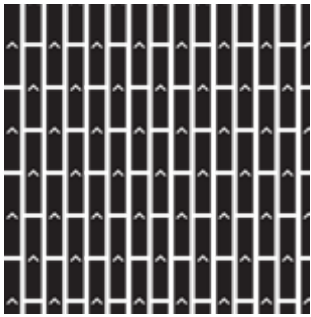






# HOW TO INSTALL

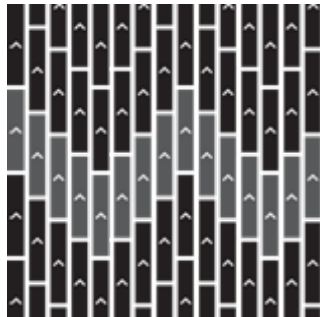
**ASHLAR**



**SEMI ASHLAR**



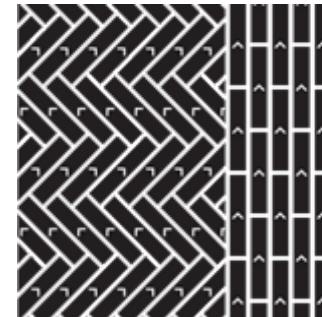
**QUARTER TURN**



**HERRINGBONE**



**RANDOM**







Standard  
*CARPETS*

[www.standardcarpets.com](http://www.standardcarpets.com)