



TRICK OR
TREAT



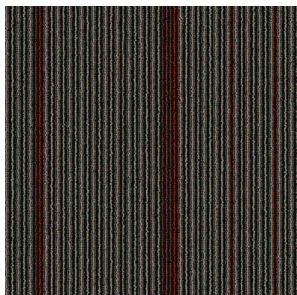
| | |
|---------------------------------|--|
| CONSTRUCTION | LOOP |
| PILE FIBER COMPOSITION | 100% Olefin |
| YARN TYPE | BCF |
| DYE METHOD | Solution Dyed |
| PILE WEIGHT | 600g/m ² |
| NUMBER OF TUFTS | 177750/m ² |
| TUFTING GAUGE | 1/10" |
| PRIMARY BACKING | Non-Woven |
| SECONDARY BACKING | Stable Shield - 100% Vinyl |
| OPTIONAL BACKING | Recova-PU Cushion , EcoShield-100% Recycled Vinyl |
| TILE SIZE | 50 cm x 50 cm (19.6" x 19.6") |
| PILE HEIGHT | 3.5 mm |
| TOTAL HEIGHT | 6.6 mm |
| PILE TREATMENT | INVISTA Anti-Soil Treatment, Anti-Microbial (optional) |
| RECOMMENDED INSTALLATION | Quarter Turn or Brick |

SPECIFICATIONS

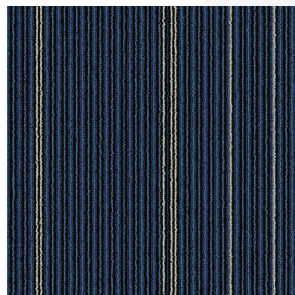
COLOURLINE



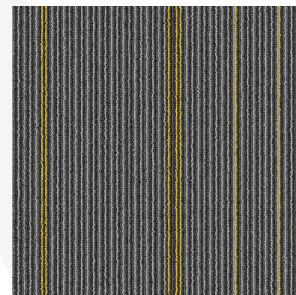
TRICK OR TREAT - 646



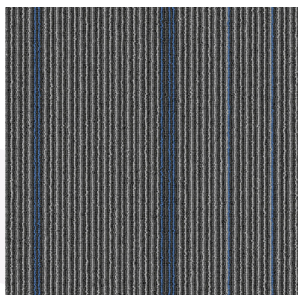
TRICK OR TREAT - 648



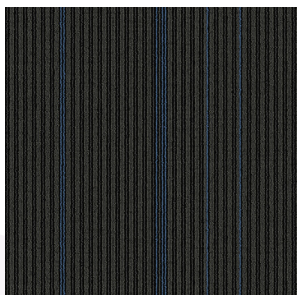
TRICK OR TREAT - 656



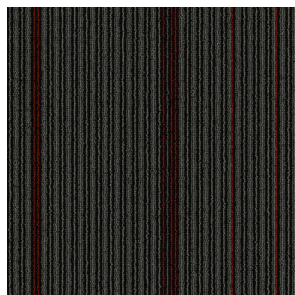
TRICK OR TREAT - 675



TRICK OR TREAT - 676



TRICK OR TREAT - 677



TRICK OR TREAT - 678



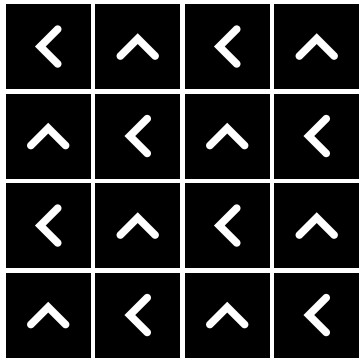
TRICK OR TREAT - 695



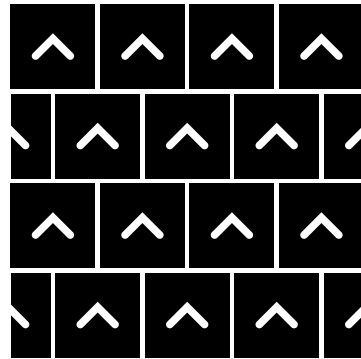


HOW TO INSTALL

QUARTER TURN



BRICK





Standard
CARPETS

www.standardcarpets.com