



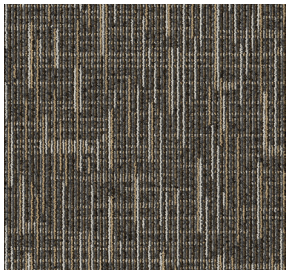
VICTORY



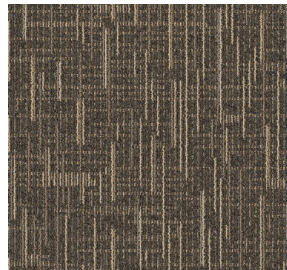
CONSTRUCTION	LOOP
PILE FIBER COMPOSITION	100% Olefin
YARN TYPE	BCF
DYE METHOD	Solution Dyed
PILE WEIGHT	750g/m ²
NUMBER OF TUFTS	229100/m ²
TUFTING GAUGE	1/10"
PRIMARY BACKING	Non-Woven
SECONDARY BACKING	Stable Shield - 100% Vinyl
OPTIONAL BACKING	Recova-PU Cushion , EcoShield-100% Recycled Vinyl
TILE SIZE	50 cm x 50 cm (19.6 in x 19.6 in)
PILE HEIGHT	2.5 mm / 5.5 mm
TOTAL HEIGHT	8.00 mm
PILE TREATMENT	INVISTA Anti-Soil Treatment, Anti-Microbial (optional)
RECOMMENDED INSTALLATION	Quarter Turn or Brick

SPECIFICATIONS

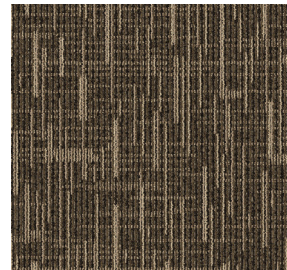
COLOURLINE



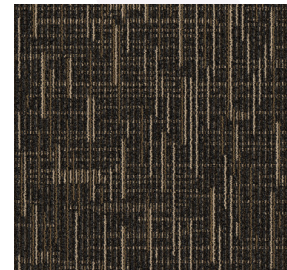
Victory - 745



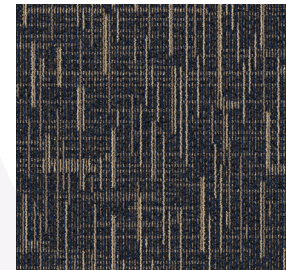
Victory - 746



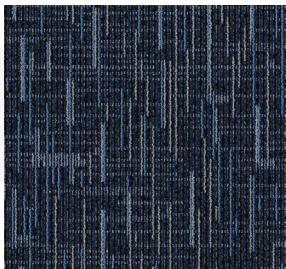
Victory - 747



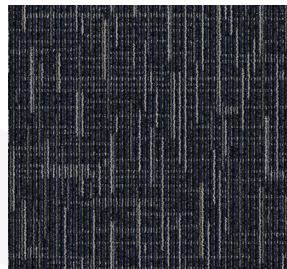
Victory - 748



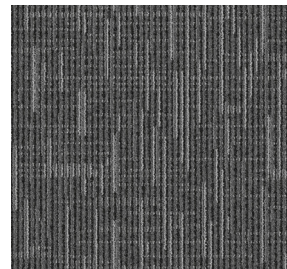
Victory - 755



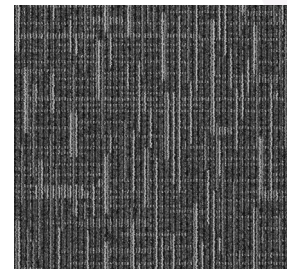
Victory - 756



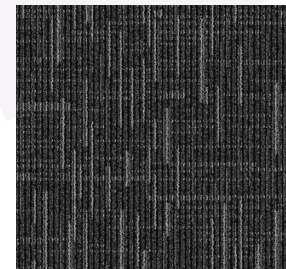
Victory - 758



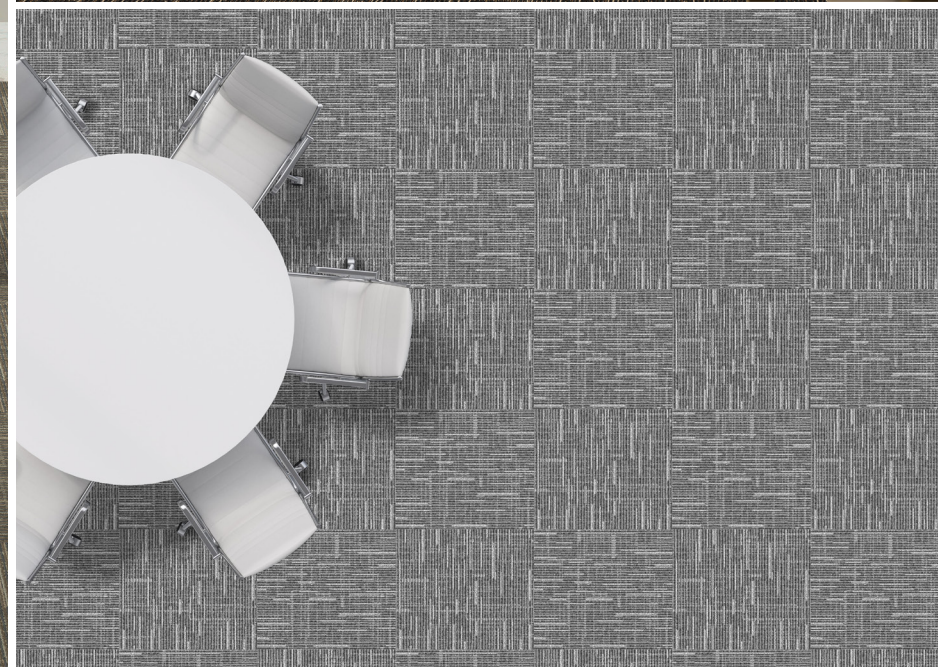
Victory - 775



Victory - 777



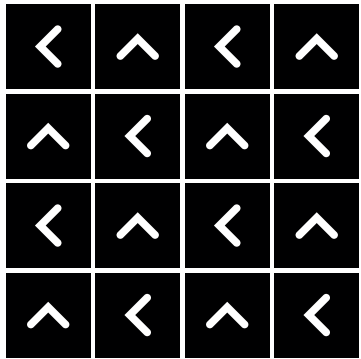
Victory - 778



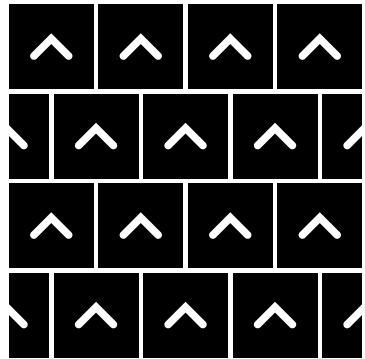


HOW TO INSTALL

QUARTER TURN



BRICK





Standard
CARPETS

www.standardcarpets.com