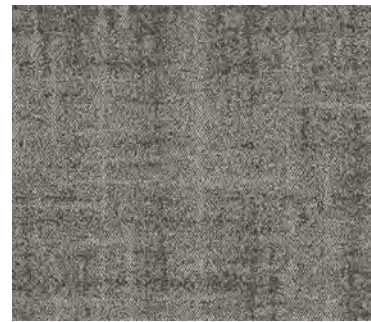


# SPECIFICATION SHEET

## FAHRENHEIT



CONSTRUCTION	SCROLL LOOP PILE
PILE FIBER COMPOSITION	100% Nylon (Polyamide6)
YARN TYPE	Cable
DYE METHOD	Solution Dyed
PILE WEIGHT	550g/m <sup>2</sup>
NUMBER OF TUFTS	208820/m <sup>2</sup>
TUFTING GAUGE	1/10"
PRIMARY BACKING	Non-Woven
BACKING STRUCTURES	StableShield 100% Vinyl with PI-PC Recycled content
OPTIONAL BACKING	Recova-PLUS 500, Eco Shield 100% Recycled Vinyl
TILE SIZE	50x50cm
PILE HEIGHT	3.0mm
TOTAL HEIGHT	6.0mm
PILE TREATMENT	UV Treated Yarn & Walk Of Fame
RECOMMENDED	Quarter Turn or Brick

## PERFORMANCE SPECIFICATION

VOC EMISSION	ASTM D5116-17	<0.5 mg/m <sup>2</sup> /hour (CRI GLP)
FLAMMABILITY	ASTM D-2859//FF 1-70//16CFR 1630	Pass 8/8
REACTION TO FIRE	EN ISO 9239-1 (2010)	Cfl-s1
STATIC PROPENSITY	AATCC 134-2011	0.2 kV
COLOR FASTNESS	AATCC/16	5/5 on Grey Scale
THERMAL RESISTANCE	DIN 52612	.04m <sup>2</sup> K/W
IMPACT SOUND INSULATION	ISO 140-8	ΔLw 23dB
SOUND ABSORPTION LEVEL	EN ISO 354	aw: 0.15(H)
SOILING PROPENSITY	ASTM D 6540-00	4
DIMENSIONAL STABILITY	EN 986	< 0.20%
CASTOR CHAIR TEST	ISO 4918	Rating 4.0



WEAR STABILITY  
CASTOR CHAIR COMPATIBILITY  
ANTISTATIC  
LIGHT FASTNESS



Standard  
CARPETS

- Shading or Pile reversal is an inherent attribute of cut pile carpets and not a manufacturing defect
- Color may slightly vary from one dye lot to another dye lot
- Total weight of the product can have a normal variation of ± 5%
- We reserve the right to amend the above specification without prior notice with changes in raw material supplies